

## CONTENTS

|  |   |
|--|---|
| Engineering Data .....                               | 4 |
| Printed Circuit Boards .....                         | 4 |
| New Series MOSFET<br>(RA, S-AU, S-AV) .....          | 5 |
| VHF/UHF Mitsubishi .....                             | 6 |
| VHF/UHF Motorola .....                               | 7 |
| VHF/UHF Toshiba & Mitsubishi<br>(PF, SAU, SAV) ..... | 8 |
| ICOM .....   | 8 |
| VHF/UHF Philips .....                                | 8 |

# RF POWER MODULES

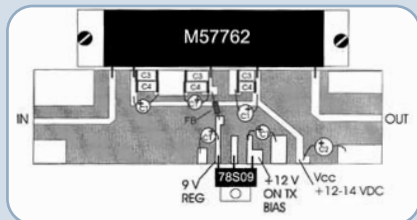
## Printed Circuit Boards for RF Power Modules

For Mitsubishi, Toshiba, and other RF Power Modules

### Case Style H3

(M57727, M57735, M57745, M57762, SAU4, etc.). Easily modified to use H2 case styles (SAV7, SAV15, SAV17, etc.).

Includes application notes for module frequencies 50-1300 MHz. Provides for placement of bypass capacitors and choke coils. Connections for MC7809 voltage regulator if required. Double-sided FR4 board with plated thru holes.



Size 4.1" x 1.0".

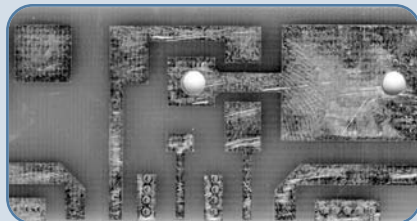
(Module Data Sheet Recommended.)

Part #: DEM2318  
Price: \$15.00

### Case Style H12, H13 or H27

(M57787, M57799, M67715, M67723 and most 42-45mm length modules).

Includes application notes for module frequencies 50-1300 MHz. Provides for placement of bypass capacitors and choke coils. Connections for MC7809 (78S09) voltage regulator if required. Double sided FR4 board.



Size 1.125" x 2.75".

(Module Data Sheet Recommended.)

Part #: DEM2303  
Price: \$12.00

### Case Style H2 & 5-53P (MOSFET)

Will fit most Mitsubishi RA Series modules of 13, 30, 45 & 60 watt, and Toshiba SAV Series utilizing H2 & 5-53P configuration.

Originally designed for RA18H1213G 1200-1300MHz module, the DEM2330 comes with application notes for this module. Can be used for most applications from 50-1300MHz when appropriate caps and inductors are used. FR4 board with plated thru holes.



Size 3.75" x 1.5".

(Module Data Sheet Recommended.)

Part #: DEM2330  
Price: \$15.00

To view Data Sheets for modules, please visit

[www.rfparts.com](http://www.rfparts.com)

Data Sheets are available in pdf format.

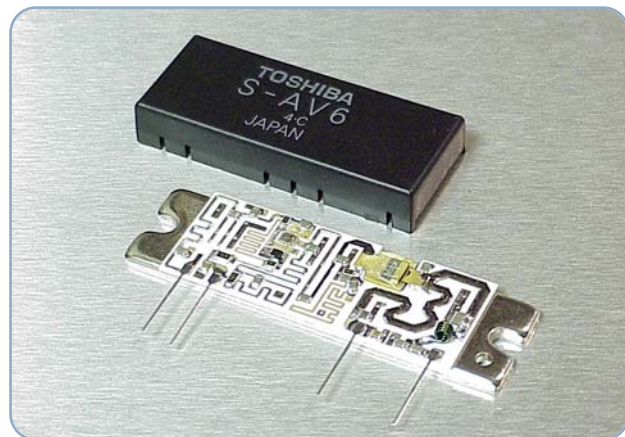
## Complete Engineering Data for RF Modules

\$1.50/module.

**NOTE:** Before Module Installation, antenna switching PIN diodes should be tested (normal Ohmmeter test for Hi/Lo resistance).

No Exchange or Warranty on transistors or modules which, in our opinion, have been damaged, installed, or soldered to. Modules and Transistors are fully tested under load and SWR by the factory to meet their specifications. Check your circuit, antenna, coax, etc., to make sure it is properly adjusted or repaired before installing new part.

No further Warranty is assumed or implied.



## New Series MOSFET RF Power Modules

| Part Number                 | Freq.   | Vdd    | P out  | Eff. | P in mW | Case  | 1-4 Net Ea. |
|-----------------------------|---------|--------|--------|------|---------|-------|-------------|
| <b>VHF Band, Low Power</b>  |         |        |        |      |         |       |             |
| RA07M0608M                  | 68-88   | 7.2 V  | 7 W    | 45%  | 30      | H46S  | \$39.95     |
| RA07H0608M                  | 68-88   | 12.5 V | 7 W    | 38%  | 30      | H46   | 39.95       |
| RA07M1317MSA <sup>2</sup>   | 130-170 | 7.2 V  | 6.7 W  | 45%  | 20      | H46m  | 19.95       |
| RA08H1317M                  | 135-175 | 12.5 V | 8 W    | 50%  | 20      | H46   | 21.95       |
| RA07M1317M                  | 135-175 | 7.2 V  | 7 W    | 45%  | 20      | H46   | 19.95       |
| RA08N1317M                  | 135-175 | 9.6 V  | 8 W    | 50%  | 20      | H46   | 21.95       |
| RA07M2127M                  | 215-270 | 7.2 V  | 7 W    | 45%  | 20      | H46   | 21.95       |
| <b>VHF Band, High Power</b> |         |        |        |      |         |       |             |
| RA30H0608M                  | 68-88   | 12.5 V | 30 W   | 40%  | 50      | H2    | 64.95       |
| RA30H1317M1 <sup>2,3</sup>  | 130-170 | 12.5 V | 30 W   | 40%  | 50      | H2M   | 39.95       |
| RA13H1317M                  | 135-175 | 12.5 V | 13 W   | 40%  | 50      | H2    | 32.95       |
| RA30H1317M                  | 135-175 | 12.5 V | 30 W   | 40%  | 50      | H2    | 39.95       |
| RA60H1317M                  | 135-175 | 12.5 V | 60 W   | 40%  | 50      | H2    | 59.95       |
| RA35H1516M                  | 154-162 | 12.5 V | 35 W   | 47%  | 50      | H2    | 26.95       |
| RA33H1516M1 <sup>2,3</sup>  | 154-162 | 12.5 V | 33 W   | 50%  | 10      | H57M  | 24.95       |
| RA30H1721M                  | 175-215 | 12.5 V | 30 W   | 40%  | 50      | H2    | 44.95       |
| RA30H2127M                  | 210-270 | 12.5 V | 30 W   | 40%  | 50      | H2    | 44.95       |
| SAV32                       | 133-174 | 12.5 V | 60 W   | 45%  | 50      | 5-53P | 37.95       |
| SAV33                       | 134-174 | 12.5 V | 32 W   | 45%  | 50      | 5-53P | 29.95       |
| SAV34 (DIGITAL)             | 150-165 | 10.8 V | 39 dBm | -    | 12dBm   | 5-32F | 24.95       |
| SAV35                       | 154-162 | 12.5 V | 32 W   | 50%  | 10      | 5-32G | 24.95       |
| SAV36                       | 134-174 | 12.5 V | 80 W   | 45%  | 50      | 5-53P | 37.95       |
| SAV37                       | 154-162 | 12.5 V | 32 W   | 50%  | 10      | 5-32G | 29.95       |
| SAV38 (DIGITAL)             | 260-266 | 7.2 V  | 35 dBm | -    | 19dBm   | 5-23F | 24.95       |
| SAV40                       | 220-246 | 12.5 V | 30W    | 40%  | 50      | 5-32G | 32.95       |
| RA60H1317M1A                | 136-174 | 12 V   | 60W    | 45%  | 50      | H2M   | 59.95       |
| <b>UHF Band, Low Power</b>  |         |        |        |      |         |       |             |
| RA07H3340M                  | 330-400 | 12.5 V | 7 W    | 40%  | 20      | H46   | 24.75       |
| RA07M3340M                  | 330-400 | 7.2 V  | 7 W    | 40%  | 20      | H46   | 21.25       |
| RA07N3340M                  | 330-400 | 9.6 V  | 7 W    | 43%  | 20      | H46   | 21.95       |
| RA07M3843M                  | 378-430 | 7.2V   | 7W     | 40%  | 50      | H46S  | 21.25       |
| RA03M4043MD                 | 400-430 | 7.2 V  | 6.3 W  | 35%  | 80      | H46S  | 33.95       |
| RA03M3540M                  | 350-400 | 7.2 V  | 6.3 W  | 35%  | 80      | H46S  | 33.95       |
| RA07H4047M                  | 400-470 | 12 V   | 7 W    | 40%  | 20      | H46   | 22.75       |
| RA07M4047M                  | 400-470 | 7.2 V  | 7 W    | 40%  | 50      | H46   | 21.25       |
| RA07M4047MSA <sup>2</sup>   | 400-470 | 7.2 V  | 7 W    | 40%  | 50      | H46M  | 21.25       |
| RA03M4547MD                 | 450-470 | 7.2 V  | 6.3 W  | 35%  | 80      | H46S  | 33.95       |
| RA07M4452MSA <sup>2</sup>   | 450-520 | 7.2 V  | 7 W    | 40%  | 50      | H46M  | 21.25       |
| RA07H4452M                  | 440-520 | 12 V   | 7 W    | 40%  | 50      | H46   | 22.75       |
| RA07M4452M                  | 440-520 | 7.2 V  | 7 W    | 40%  | 50      | H46   | 21.25       |
| RA07N4452M                  | 440-520 | 9.6V   | 7.5W   | 40%  | 20      | H46   | 21.95       |

| Part Number                 | Freq.     | Vdd    | P out  | Eff. | P in mW | Case  | 1-4 Net Ea. |
|-----------------------------|-----------|--------|--------|------|---------|-------|-------------|
| <b>UHF Band, High Power</b> |           |        |        |      |         |       |             |
| RA13H3340M                  | 330-400   | 12.5 V | 13 W   | 40%  | 50      | H2    | 32.95       |
| RA30H3340M                  | 330-400   | 12.5 V | 30 W   | 40%  | 50      | H2    | 44.95       |
| RA13H4047M                  | 400-470   | 12.5 V | 13 W   | 40%  | 50      | H2    | 32.95       |
| RA30H4045MR                 | 400-450   | 12.5 V | 30 W   | 40%  | 50      | H2R   | 44.95       |
| RA45H4045MR                 | 400-450   | 12.5 V | 45 W   | 35%  | 50      | H2    | 62.95       |
| RA30H4047M                  | 400-470   | 12.5 V | 30 W   | 40%  | 50      | H2S   | 39.95       |
| RA30H4047M1 <sup>2,3</sup>  | 400-470   | 12.5 V | 30 W   | 42%  | 50      | H2M   | 39.95       |
| RA45H4047M                  | 400-470   | 12.5 V | 45 W   | 35%  | 50      | H2    | 62.95       |
| RA60H4047M1                 | 400-470   | 12.5V  | 60W    | 40%  | 100     | H2M   | 67.95       |
| RA60H4452M1                 | 440-520   | 12.5V  | 60W    | 40%  | 100     | H2M   | 67.95       |
| RA13H4452M                  | 440-520   | 12.5 V | 13 W   | 40%  | 50      | H2    | 32.95       |
| RA30H4452M                  | 440-520   | 12.5 V | 30 W   | 40%  | 50      | H2S   | 39.95       |
| RA45H4452M                  | 440-520   | 12.5 V | 45 W   | 35%  | 50      | H2    | 62.95       |
| RA30H4452M1 <sup>2,3</sup>  | 450-520   | 12.5 V | 30 W   | 42%  | 50      | H2M   | 39.95       |
| SAU82H A                    | 450-520   | 12.5V  | 60W    | 40%  | 50      | 5-53P | 39.95       |
| SAU82L                      | 400-470   | 12.5V  | 60W    | 40%  | 50      | 5-53P | 39.95       |
| SAU82VL                     | 378-440   | 12.5V  | 60W    | 40%  | 50      | 5-53P | 39.95       |
| RA60H3847M1 <sup>2</sup>    | 378-470   | 12.5 V | 60 W   | 40%  | 50      | H2M   | 67.95       |
| SAU83H                      | 450-520   | 12.5V  | 32W    | 40%  | 50      | 5-53P | 39.95       |
| SAU83L                      | 400-470   | 12.5V  | 32W    | 40%  | 50      | 5-53P | 39.95       |
| SAU93                       | 430-500   | 12.5V  | 60W    | 40%  | 50      | 5-53P | 39.95       |
| SAU94                       | 450-490   | 12.5V  | 7.55W  | 40%  | 25      | 5-23E | 15.95       |
| SAU99H                      | 470-520   | 12.5V  | 7W     | 45%  | 20      | 5-23F | 19.95       |
| SAU99L                      | 400-430   | 12.5V  | 7W     | 45%  | 20      | 5-23F | 18.95       |
| <b>800 MHz Band</b>         |           |        |        |      |         |       |             |
| RA45H7687M1                 | 764-870   | 12.8 V | 45 W   | 33%  | 50      | H2M   | 69.95       |
| RA02M8087MD                 | 806-869   | 7.2 V  | 2 W    | 30%  | 40      | H46S  | 39.95       |
| RA03M8087M                  | 806-870   | 7.2 V  | 3.6 W  | 32%  | 50      | H11   | 22.75       |
| RA20H8087M                  | 806-870   | 12.5 V | 20 W   | 25%  | 50      | H2    | 59.95       |
| RA45H8087M                  | 806-870   | 12.5 V | 45W    | 25%  | 50      | H2    | 69.95       |
| RA06H8285M                  | 820-851   | 12.5 V | 6 W    | 35%  | 1       | H11   | 24.75       |
| RA01L8693MA <sup>1</sup>    | 865-928   | 3.3 V  | 1.4 W  | 38%  | 30      | H58   | 19.95       |
| RA05H8693M <sup>1</sup>     | 866-928   | 14 V   | 5 W    | -    | 1       | H11S  | 26.95       |
| RA03M8894M                  | 889-941   | 7.2 V  | 3.6 W  | 32%  | 50      | H11   | 22.75       |
| RA13H8891MA                 | 889-915   | 12.5 V | 13 W   | 30%  | 20      | H2    | 57.95       |
| RA13H8891MB                 | 880-915   | 12.5 V | 13 W   | 35%  | 10      | H11   | 32.95       |
| RA20H8994M                  | 896-941   | 12.5 V | 20 W   | 25%  | 50      | H2    | 59.95       |
| RA45H8994M1 <sup>2</sup>    | 896-941   | 12.8 V | 45 W   | 33%  | 50      | H2M   | 72.95       |
| SAU86 (DIGITAL)             | 889-915   | 12.5 V | 35 dBm | 35%  | 320     | 5-28C | 19.95       |
| SAU100 (DIGITAL)            | 905-915   | 10.8 V | 39 dBm | -    | 5dBm    | 5-23F | 22.95       |
| RA01L9595M <sup>1</sup>     | 952-954   | 3.3 V  | 1.4 W  | 35%  | 30      | H58   | 20.50       |
| RA03M9595M <sup>1</sup>     | 952-954   | 8 V    | 3 W    | -    | 50      | H46S  | 23.95       |
| RA05H9595M <sup>1</sup>     | 952-954   | 14 V   | 5 W    | -    | 1       | H11S  | 26.95       |
| <b>1200 MHz Band</b>        |           |        |        |      |         |       |             |
| RA18H1213G                  | 1240-1300 | 12.5 V | 18 W   | 20%  | 200     | H2    | 69.95       |

NOTES: <sup>1</sup> RFID

<sup>2</sup> METAL CAP

<sup>3</sup> GLASS EPOXY BRD

Additional specifications and case information are available at: [www.rfparts.com](http://www.rfparts.com)

# RF POWER MODULES

## VHF-UHF Power Modules



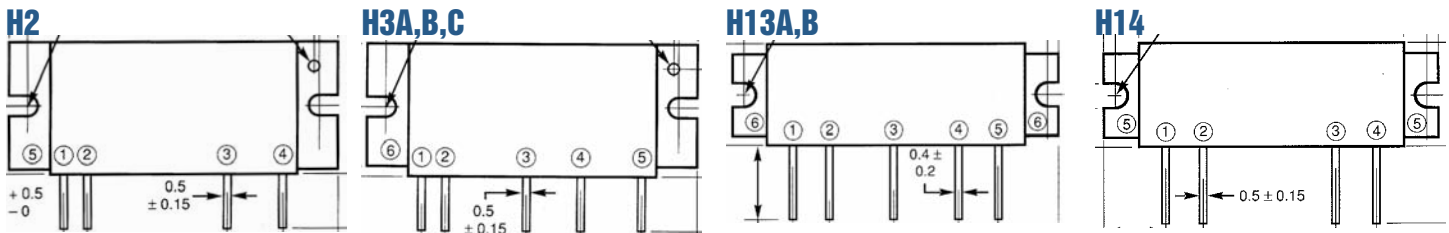
| Part Number               | Freq Range       | Max BW           | P out Min. W | P in mW     | Bias Class | Case        | 1-4 Net Ea.  |
|---------------------------|------------------|------------------|--------------|-------------|------------|-------------|--------------|
| M57704EL                  | 335-360          | —                | 13           | 200         | C          | H3A         | Call         |
| M57704H <sup>2</sup>      | 450-470          | —                | 13           | 200         | C          | H3A         | 79.95        |
| M57704H-PULL              | 450-470          | —                | 13           | 200         | C          | H3A         | Call         |
| M57704L                   | 400-420          | —                | 13           | 200         | C          | H3A         | 49.95        |
| M57704M                   | 430-450          | 420-450          | 13           | 200         | C          | H3A         | 54.95        |
| M57704SH                  | 490-512          | —                | 13           | 200         | C          | H3A         | 45.90        |
| M57704SL                  | 360-380          | —                | 13           | 200         | C          | H3A         | 45.90        |
| M57704UH                  | 470-490          | —                | 13           | 200         | C          | H3A         | 45.90        |
| M57706                    | 145-175          | —                | 8            | 200         | C          | H2          | 42.95        |
| M57706L                   | 135-145          | 144-160          | 8            | 200         | C          | H2          | 42.95        |
| M57710A                   | 156-160          | 152-164          | 28           | 200         | C          | H2          | Call         |
| <b>M57713</b>             | <b>144-148</b>   | —                | <b>17</b>    | <b>200</b>  | <b>AB</b>  | <b>H3B</b>  | <b>Call</b>  |
| <b>SC1013</b>             | <b>144-148</b>   | <b>140-150</b>   | <b>17</b>    | <b>200</b>  | <b>AB</b>  | <b>H3B</b>  | <b>59.95</b> |
| M57714                    | 450-470          | 440-470          | 7            | 100         | C          | H3A         | 49.90        |
| M57714EL <sup>1</sup>     | 335-360          | —                | 7            | 100         | C          | H3A         | 49.90        |
| M57714M                   | 430-450          | —                | 7            | 100         | C          | H3A         | 49.90        |
| M57714UH                  | 470-490          | —                | 7            | 100         | C          | H3A         | 49.90        |
| M57715                    | 144-148          | —                | 13           | 200         | C          | H2          | 27.95        |
| M57716                    | 430-450          | —                | 17           | 200         | AB         | H3C         | Call         |
| M57716L                   | 360-380          | —                | 17           | 200         | AB         | H3C         | Call         |
| M57719                    | 145-175          | —                | 14           | 200         | C          | H2          | Call         |
| M57719L                   | 135-145          | —                | 14           | 200         | C          | H2          | 49.90        |
| M57719N                   | 142-163          | 140-165          | 14           | 200         | C          | H2          | Call         |
| M57721                    | 450-512          | —                | 7            | 10          | AB         | H12         | Call         |
| M57721L                   | 350-400          | 335-410          | 7            | 10          | AB         | H12         | 24.95        |
| M57721M                   | 400-450          | —                | 7            | 10          | AB         | H12         | Call         |
| M57721UL <sup>2</sup>     | 335-370          | —                | 7            | 10          | AB         | H12         | 31.30        |
| M57726                    | 144-148          | 140-152          | 43           | 400         | C          | H2B         | 79.95        |
| M57726R                   | 144-148          | 140-152          | 43           | 400         | C          | (rev)       | 81.55        |
| M57727 <sup>2</sup>       | 144-148          | 140-150          | 37           | 300         | AB         | H3B         | Call         |
| M57729                    | 430-450          | 420-450          | 30           | 300         | C          | H3A         | 67.75        |
| M57729EL                  | 335-360          | —                | 30           | 300         | C          | H3A         | 69.90        |
| M57729GL                  | 326-346          | —                | 30           | 300         | C          | H3A         | 69.90        |
| <b>M57729H</b>            | <b>450-470</b>   | <b>440-470</b>   | <b>30</b>    | <b>300</b>  | <b>C</b>   | <b>H3A</b>  | <b>79.95</b> |
| <b>SC1056</b>             | <b>450-470</b>   | <b>440-470</b>   | <b>30</b>    | <b>300</b>  | <b>C</b>   | <b>H3A</b>  | <b>79.95</b> |
| M57729L                   | 400-420          | —                | 30           | 300         | C          | H3A         | 54.95        |
| M57729SH                  | 490-512          | —                | 30           | 300         | C          | H3A         | 54.95        |
| M57729UH                  | 470-490          | —                | 30           | 300         | C          | H3A         | 54.95        |
| M57729UL <sup>1</sup>     | 380-400          | —                | 30           | 300         | C          | H3A         | 69.90        |
| <b>M57732</b>             | <b>144-175</b>   | —                | <b>7</b>     | <b>20</b>   | <b>AB</b>  | <b>H12A</b> | <b>32.95</b> |
| <b>SC1046</b>             | <b>144-175</b>   | —                | <b>7</b>     | <b>20</b>   | <b>AB</b>  | <b>H12A</b> | <b>32.95</b> |
| M57732L                   | 135-160          | 130-166          | 7            | 20          | AB         | H12A        | 24.95        |
| M57735                    | 50-54            | 48-56            | 17           | 200         | AB         | H3B         | 67.75        |
| M57737                    | 144-148          | 140-152          | 30           | 200         | C          | H2          | 39.90        |
| M57737-R                  | 144-148          | 140-152          | 30           | 200         | C          | (rev.)      | 49.95        |
| M57739C                   | 825-851          | —                | 6            | 30          | C          | H26         | 47.95        |
| M57741H <sup>1</sup>      | 164-175          | 155-185          | 28           | 300         | C          | H2          | 69.95        |
| M57741L                   | 148-160          | 140-170          | 28           | 200         | C          | H2          | 69.95        |
| M57741M                   | 156-168          | 148-175          | 28           | 300         | C          | H2          | 69.95        |
| M57744                    | 905-915          | 900-920          | 13           | 400         | C          | H3A         | 59.95        |
| M57745                    | 430-450          | 425-450          | 33           | 300         | AB         | H3C         | Call         |
| M57747                    | 144-148          | 140-150          | 13           | 200         | C          | H6          | 59.95        |
| M57752 <sup>2</sup>       | 430-450          | —                | 13           | 200         | C          | H3          | 54.95        |
| M57755                    | 806-866          | 800-875          | 10           | 100         | C          | H3A         | 79.95        |
| M57759                    | 890-915          | 890-915          | 0.2          | 2           | C          | —           | 14.95        |
| <b>M57762<sup>2</sup></b> | <b>1240-1300</b> | <b>1240-1300</b> | <b>18</b>    | <b>1000</b> | <b>AB</b>  | <b>H3B</b>  | <b>94.95</b> |
| <b>SC1040</b>             | <b>1240-1300</b> | <b>1240-1300</b> | <b>18</b>    | <b>1000</b> | <b>AB</b>  | <b>H3B</b>  | <b>94.95</b> |
| M57764 <sup>2</sup>       | 806-825          | 800-830          | 20           | 400         | C          | H3A         | 97.85        |

## Quantity Pricing Available

| Part Number                 | Freq Range     | Max BW         | P out Min. W | P in mW    | Bias Class | Case          | 1-4 Net Ea.  |
|-----------------------------|----------------|----------------|--------------|------------|------------|---------------|--------------|
| M57774                      | 220-225        | 219-232        | 30           | 300        | C          | H2            | Call         |
| M57774S                     | 185-200        | —              | 30           | 300        | C          | H2            | 59.85        |
| M57782                      | 825-851        | 805-860        | 7            | 1          | —          | H11           | 39.95        |
| M57783H <sup>2</sup>        | 150-175        | —              | 7            | 50         | AB         | H13           | 44.75        |
| M57783L                     | 135-160        | 125-175        | 7            | 50         | AB         | H13           | 34.95        |
| M57785H                     | 162-174        | —              | 7            | 50         | AB         | H12A          | 39.95        |
| M57785L                     | 135-150        | 127-163        | 7            | 50         | AB         | H12A          | 39.95        |
| M57785M <sup>1</sup>        | 150-162        | —              | 7            | 50         | AB         | H12A          | 49.95        |
| M57786H                     | 470-512        | 465-520        | 7            | 50         | AB         | H12           | 44.90        |
| M57786L <sup>2</sup>        | 380-400        | —              | 7            | 50         | AB         | H12           | 44.90        |
| M57786M                     | 430-470        | 425-480        | 7            | 50         | AB         | H12           | 39.95        |
| M57788H <sup>2</sup>        | 450-470        | 430-490        | 45           | 400        | C          | H3A           | 88.80        |
| M57788L                     | 400-430        | 390-450        | 45           | 400        | C          | H3A           | 79.95        |
| M57788M <sup>2</sup>        | 430-450        | 410-460        | 45           | 400        | C          | H3A           | 94.95        |
| <b>M57788MR<sup>1</sup></b> | <b>430-450</b> | <b>410-460</b> | <b>45</b>    | <b>400</b> | <b>C</b>   | <b>(rev.)</b> | <b>97.90</b> |
| <b>SC1318<sup>1</sup></b>   | <b>430-450</b> | <b>410-460</b> | <b>45</b>    | <b>400</b> | <b>C</b>   | <b>(rev.)</b> | <b>97.90</b> |
| M57788SH                    | 490-512        | —              | 40           | 400        | C          | H3A           | 79.95        |
| M57788UH                    | 470-490        | —              | 40           | 300        | C          | H3            | 79.95        |
| M57791                      | 890-915        | 880-930        | 7            | 1          | —          | H11           | 59.90        |
| M57792 <sup>1</sup>         | 806-870        | 800-870        | 20           | 400        | C          | H3A           | 99.95        |
| M57796H <sup>1</sup>        | 150-175        | 140-190        | 7            | 300        | AB         | H14           | 34.90        |
| M57796MA                    | 144-148        | 135-160        | 7            | 200        | AB         | H14           | 29.90        |
| M57797H                     | 450-470        | —              | 7            | 200        | AB         | H14           | 29.90        |
| M57797L                     | 400-430        | —              | 7            | 200        | AB         | H14           | 34.40        |
| M57797MA                    | 440-450        | 420-460        | 7            | 200        | AB         | H14           | 29.95        |
| M57797SH                    | 490-512        | —              | 7            | 200        | AB         | H14           | 29.95        |
| M57799H                     | 470-512        | —              | 6            | 40         | AB         | H13           | 39.90        |
| M57799L <sup>2</sup>        | 400-430        | —              | 6            | 40         | AB         | H13           | 39.90        |
| M57799M                     | 430-470        | —              | 6            | 40         | AB         | H13           | 39.90        |
| M67702 <sup>1</sup>         | 150-175        | —              | 60           | 5W         | C          | H17           | 99.95        |
| M67703M                     | 430-450        | —              | 50           | 10W        | C          | H17           | 89.95        |
| M67703SH <sup>1</sup>       | 490-512        | —              | 50           | 10W        | C          | H17           | 125.00       |
| M67705H                     | 470-512        | 460-520        | 7            | 20         | AB         | H13A          | 29.95        |
| M67705L                     | 400-430        | 400-450        | 7            | 20         | AB         | H13A          | 29.95        |
| M67705M                     | 430-470        | 420-490        | 7            | 20         | AB         | H13A          | 29.95        |
| M67706 <sup>2</sup>         | 806-870        | 790-895        | 4            | 100        | C          | H13           | 29.95        |
| M67709L                     | 350-390        | 310-395        | 13           | 10         | C          | H16           | 79.95        |
| M67709SH <sup>1</sup>       | 470-512        | —              | 13           | 10         | C          | H16           | 79.95        |
| M67709SL <sup>1</sup>       | 300-342        | —              | 13           | 10         | C          | H16           | 79.95        |
| M67709UL <sup>1</sup>       | 335-350        | —              | 13           | 10         | C          | H16           | 79.95        |
| M67710H                     | 150-175        | 140-190        | 7            | 50         | AB         | H13           | 17.95        |
| M67710L                     | 135-160        | —              | 7            | 50         | AB         | H13           | 29.95        |
| M67711                      | 1240-1300      | —              | 16           | 1000       | C          | H3B           | Call         |
| M67712                      | 220-225        | 219-239        | 30           | 200        | AB         | H3B           | 83.00        |
| M67715                      | 1240-1300      | 1220-1320      | 1.5          | 10         | AB         | H13A          | Call         |
| M67717                      | 872-905        | —              | 7            | 7          | C          | H11           | 17.95        |
| M67723 <sup>2</sup>         | 220-225        | 210-250        | 7            | 20         | AB         | H13           | 47.70        |
| M67727                      | 144-148        | —              | 60           | 500        | AB         | H17           | Call         |
| M67730L                     | 174-200        | 160-210        | 30           | 300        | C          | H2            | 69.95        |
| M67731                      | —              | —              | —            | —          | —          | —             | 45.00        |
| M67732                      | 1240-1300      | —              | 1            | 10         | AB         | H13           | Call         |
| M67741H <sup>2</sup>        | 150-175        | 140-180        | 30           | 200        | C          | H2            | 54.95        |
| M67741L                     | 135-160        | 140-180        | 30           | 200        | C          | H2            | 54.95        |
| M67742                      | 66-88          | 60-92          | 30           | 500        | C          | H2            | 89.90        |
| M67743H                     | 77-88          | 74-92          | 7            | 30         | AB         | H13A          | 49.95        |
| M67743L                     | 68-81          | 62-85          | 7            | 30         | AB         | H13A          | 49.95        |
| M67746                      | 144-148        | —              | 60           | 300        | C          | H2            | 69.95        |

Continued on next page...

Notes: <sup>1</sup> Limited Supply (10 or less) <sup>2</sup> Only a few left in stock (5 or less)



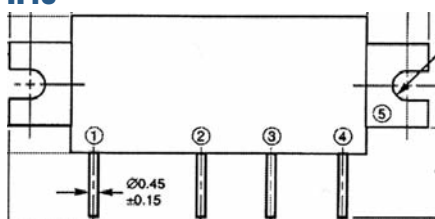
## VHF-UHF Power Modules



| Part Number                     | Freq Range | Max BW  | P out Min. W | P in mW  | Bias Class | Case       | 1-4 Net Ea.  |
|---------------------------------|------------|---------|--------------|----------|------------|------------|--------------|
| M67748H                         | 150-175    | —       | 7            | 20       | AB         | H27        | 15.95        |
| M67748HR                        | 150-175    | —       | 7            | 20       | AB         | H27R       | 24.95        |
| M67748L                         | 135-150    | 125-155 | 7            | 20       | AB         | H27        | 24.95        |
| M67748LR                        | 135-150    | 125-155 | 7            | 20       | AB         | (rev.)     | 24.95        |
| M67749GL                        | 326-346    | —       | 7            | 20       | AB         | H27        | 24.95        |
| M67749H                         | 440-470    | —       | 7            | 20       | AB         | H27        | 34.95        |
| M67749HR                        | 440-470    | —       | 7            | 20       | AB         | H27R       | 29.95        |
| M67749L                         | 400-430    | —       | 7            | 20       | AB         | H27        | 24.95        |
| M67749M                         | 430-450    | —       | 7            | 20       | AB         | H27        | 29.95        |
| M67749SH                        | 490-512    | —       | 7            | 20       | AB         | H27        | 24.95        |
| M67749UH                        | 470-490    | —       | 10           | 20       | AB         | H27        | 24.95        |
| M67754 <sup>2</sup>             | 824-849    | 810-860 | 6            | 1        | C          | H11        | 59.75        |
| <b>SC1223 / M67755H 150-175</b> |            |         | <b>7</b>     | <b>2</b> | <b>C</b>   | <b>H12</b> | <b>59.95</b> |
| M67755L <sup>1</sup>            | 134-150    | —       | 7            | 2        | AB         | H12A       | 49.65        |
| M67759                          | 872-905    | —       | 6            | 1        | C          | H27        | 24.95        |
| M67760HC                        | 896-941    | —       | 20           | 400      | AB, MOS    | H3B        | 49.95        |
| M67760LC <sup>2</sup>           | 806-870    | —       | 20           | 400      | AB, MOS    | H3B        | Call         |
| M67766A                         | 820-850    | 820-855 | 6            | 2        | AB         | H3A        | 34.90        |
| M67769C                         | 890-915    | 890-928 | 15           | 1        | C          | H3         | 47.95        |
| M67776H <sup>2</sup>            | 896-941    | 860-950 | 8            | 4        | C          | H11        | Call         |
| M67776L <sup>2</sup>            | 806-870    | 790-890 | 8            | 4        | C          | H11        | Call         |
| M67781H                         | 150-175    | —       | 40           | 300      | C          | H2         | 77.75        |
| M67781L                         | 135-160    | 125-160 | 40           | 300      | C          | H2         | 48.95        |
| M67796                          | 1240-1300  | —       | 1.5          | 10       | C          | H27        | 59.95        |
| M67797                          | 890-915    | —       | 2            | 10       | —          | —          | 12.95        |
| M67799HA                        | 450-470    | 430-470 | 7.5          | 20       | AB, MOS    | H46        | 24.95        |
| M68702H                         | 150-175    | —       | 60           | 300      | C          | H2         | Call         |
| M68702L <sup>1</sup>            | 135-160    | —       | 60           | 300      | C          | H2         | 84.95        |
| M68703HA                        | 440-450    | —       | 50           | 300      | C          | H3         | 59.95        |
| M68703SHA                       | 470-490    | —       | 50           | 300      | C          | H3         | 59.95        |
| M68706 <sup>1</sup>             | 250-270    | —       | 30           | 300      | C          | H3         | 62.20        |
| M68707L <sup>1</sup>            | 215-230    | —       | 7            | 20       | AB         | H12        | 49.95        |
| M68710EL                        | 290-330    | —       | 2            | 20       | AB, MOS    | H46        | 15.95        |
| M68710H                         | 450-470    | 440-480 | 2            | 20       | AB, MOS    | H46        | 15.95        |
| M68710L <sup>1</sup>            | 400-430    | 390-440 | 2            | 20       | AB, MOS    | H46        | 29.95        |
| M68710UH                        | 470-520    | —       | 2            | 20       | AB, MOS    | H46        | 24.95        |
| M68712N                         | 142-163    | —       | 2            | 30       | C          | H46        | 27.95        |
| M68719                          | 1240-1300  | —       | 16           | 100      | AB, MOS    | H3B        | 79.95        |
| M68729                          | 220-245    | —       | 30           | 300      | C          | H2         | See SAV15    |
| M68731H                         | 150-175    | —       | 7            | 50       | AB, MOS    | H46        | 15.95        |
| M68731HM                        | 145-174    | —       | 6.5          | 50       | AB, MOS    | H46        | 17.95        |
| M68731L                         | 135-155    | —       | 7            | 50       | AB, MOS    | H46        | 15.95        |
| M68731N                         | 142-163    | —       | 7            | 50       | AB, MOS    | H46        | 17.95        |
| M68732H                         | 450-470    | —       | 7            | 50       | AB, MOS    | H46        | Call         |
| M68732LA                        | 400-450    | —       | 7            | 50       | AB, MOS    | H46        | 29.95        |
| M68732L <sup>1</sup>            | 400-430    | —       | 7            | 50       | AB, MOS    | H46        | 29.95        |
| M68732SH                        | 490-512    | —       | 7            | 50       | AB, MOS    | H46        | 17.95        |
| M68732SL                        | 330-380    | —       | 7            | 50       | AB, MOS    | H46        | 17.95        |
| M68732UH                        | 470-490    | —       | 7            | 50       | AB, MOS    | H46        | 17.95        |
| M68732UL                        | 380-400    | —       | 7            | 50       | AB, MOS    | H46        | 17.95        |
| M68757H                         | 896-941    | —       | 3            | 50       | AB, MOS    | H46        | Call         |
| M68762H <sup>1</sup>            | 440-490    | —       | 30           | 300      | C          | H3         | Call         |
| M68762L                         | 400-450    | —       | 30           | 300      | C          | H3         | 59.95        |
| M68769H                         | 440-490    | —       | 45           | 300      | C          | H3         | 89.95        |
| M68769SH                        | 470-520    | —       | 45           | 300      | C          | H3         | 59.95        |

Notes: <sup>1</sup> Limited Supply (10 or less) <sup>2</sup> Only a few left in stock (5 or less)

### H46



All module specifications are believed correct. Not responsible for any errors.

See page 206 for more information on Case Styles.

## VHF-UHF Power Modules

**MOTOROLA**

Call for price and availability.

| Part Number            | Zo Ohms | DC Volts | BW MHz  | Max BW     | P out Min. W | P in mW | Bias Class | Case                          |
|------------------------|---------|----------|---------|------------|--------------|---------|------------|-------------------------------|
| 51-8011E01             | 50      | —        | 800     | —          | —            | —       | —          | Specifications not available. |
| CA2256R                | —       | —        | —       | —          | —            | —       | —          | Specifications not available. |
| CA2601BU <sup>2</sup>  | —       | —        | —       | —          | —            | —       | —          | Specifications not available. |
| CA2717 <sup>2</sup>    | —       | —        | —       | —          | —            | —       | —          | Specifications not available. |
| CA2830C                | 50      | 24       | 5-200   | —          | 1            | 1       | A          | 714F-01/1                     |
| CA5815CS               | 50      | 15       | 10-1000 | —          | 1.0          | .03     | A          | 714P/3                        |
| CA5915 <sup>2</sup>    | —       | —        | —       | —          | —            | —       | —          | Specifications not available. |
| MHW591 <sup>1</sup>    | 50      | 12.5     | 1-250   | —          | 0.7          | 1       | A          | 714/1                         |
| MHW592                 | 50      | 24       | 1-250   | —          | 0.7          | 1       | A          | 714/1                         |
| MHW593                 | 50      | 13.6     | 10-400  | —          | 0.7          | 1       | A          | 714/1                         |
| MHW602                 | 50      | 12.5     | 146-174 | 140-180    | 20           | 175     | C          | 297-02                        |
| MHW607-1               | 50      | 7.5      | 136-150 | —          | 7            | 1       | C          | 301K-02                       |
| MHW607-2               | 50      | 7.5      | 146-174 | —          | 7            | 1       | C          | 301K-02                       |
| MHW612 <sup>2</sup>    | 50      | 12.5     | 146-174 | —          | 20           | 400     | C          | 301A-03                       |
| MHW707-1               | 50      | 7.5      | 403-440 | —          | 7            | 1       | C          | 301J-02                       |
| MHW707-2               | 50      | 7.5      | 440-470 | —          | 7            | 1       | C          | 301J-02                       |
| MHW710-1 <sup>1</sup>  | 50      | 12.5     | 400-440 | —          | 15           | 250     | C          | 700-0                         |
| MHW710-2               | 50      | 12.5     | 440-470 | —          | 15           | 250     | C          | 700-03                        |
| MHW720A2               | 50      | 12.5     | 400-512 | —          | .15          | 20      | C          | 700-04/1                      |
| MHW803-1 <sup>1</sup>  | 50      | 7.5      | 820-850 | —          | 2            | .001    | C          | 301E-0411                     |
| MHW806A4               | 50      | 12.5     | 806-960 | —          | .04          | 6       | C          | 301H                          |
| MHW807-1 <sup>1</sup>  | 50      | 12.5     | 820-850 | —          | 6            | 1       | C          | 301L-01                       |
| MHW807-2 <sup>1</sup>  | 50      | 12.5     | 870-905 | —          | 6            | 1       | C          | 301L-01                       |
| MHW812-A3              | 50      | 13       | 870-950 | —          | 12           | 10      | C          | Call                          |
| MHW820-1               | 50      | 12.5     | 806-870 | —          | 20           | 250     | C          | 301-G01                       |
| MHW820-2               | 50      | 12.5     | 806-890 | —          | 20           | 250     | C          | 301-G01                       |
| MHW912                 | 50      | 12.5     | 884-915 | —          | 12.5         | 1       | A          | 301R-01                       |
| MHW927B                | 50      | 12.5     | 824-849 | —          | 6            | 1       | AB         | 301AA/1                       |
| MHW932                 | 50      | 12.5     | 890-915 | 880-920    | 32           | 100     | AB         | 301S-02                       |
| MHW5122 <sup>1</sup>   | 75      | 28       | 40-450  | 60 Ch CATV | Gp=12dB      | —       | —          | 714-06                        |
| MHW5182 <sup>1</sup>   | 75      | 28       | 40-450  | 60 Ch CATV | Gp=18dB      | —       | —          | 714-06                        |
| MHW5222                | 75      | 24       | 40-450  | 60 Ch CATV | Gp=22dB      | —       | A          | 714/1                         |
| MHW5222A               | 75      | 24       | 40-450  | 60 Ch CATV | Gp=22dB      | —       | A          | 714/1                         |
| MHW6182                | 75      | 24       | 40-555  | 77 Ch CATV | Gp=18dB      | —       | A          | 714/1                         |
| MHW9002-2 <sup>2</sup> | 50      | 5.8      | 806-960 | —          | .005         | 1.4     | C          | 420A                          |
| QRF400                 | —       | —        | —       | —          | —            | —       | —          | Specifications not available. |
| UX0151                 | —       | —        | —       | —          | —            | —       | —          | Specifications not available. |
| 74N16                  | —       | —        | —       | —          | —            | —       | —          | Specifications not available. |
| 85Y49                  | —       | —        | —       | —          | —            | —       | —          | Specifications not available. |

Notes: <sup>1</sup> Limited Supply (10 or less) <sup>2</sup> Only a few left in stock (5 or less)

## TECHNICAL QUESTIONS?

Contact our Tech Support

Department at:

**760-744-0500**

# RF POWER MODULES

## VHF-UHF Power Modules



If you do not see the part number you need, call (760) 744-0750.

| Part Number   | Freq Range     | Max BW         | P out Min. W | P in mW    | Bias Class | Case      | 1-4 Net Ea        |
|---------------|----------------|----------------|--------------|------------|------------|-----------|-------------------|
| PF0010        | 820-850        | -              | 6            | 2          | C          | -         | \$ 49.95          |
| PF0015        | 824-849        | -              | 1.2          | 1          | C          | -         | 29.95             |
| PF0030        | 824-849        | -              | 6            | 2          | C          | RF-B2     | 29.75             |
| PF0032        | 872-905        | -              | 6            | 2          | C          | RF-B2     | 29.75             |
| SAU3          | 430-450        | 427-450        | 17           | 200        | C          | H2        | 56.95             |
| SAU4          | 430-450        | 430-450        | 10           | 200        | AB         | H4        | 49.95             |
| SAU6L/NT410A  | 400-440        | -              | 13           | 200        | C          | H2        | 39.95             |
| SAU10H        | 450-470        | -              | -            | -          | -          | -         | 24.95             |
| SAU12         | 825-845        | -              | 8            | 1          | C          | H4        | 59.95             |
| SAU16H        | 450-470        | 430-495        | 5            | 150        | AB         | 5-30H     | 29.95             |
| SAU16L        | 400-430        | -              | 5            | 150        | C          | -         | 29.95             |
| SAU16SH       | 490-512        | -              | 5            | 150        | AB         | -         | 29.95             |
| SAU17A        | 870-915        | 870-920        | 8            | 1          | C          | H2        | 59.60             |
| SAU21         | 825-845        | -              | 6            | 1          | C          | -         | 39.95             |
| SAU27AH       | 490-512        | -              | 32           | 200        | C          | H3        | 69.95             |
| SAU35AH       | 450-470        | 420-470        | 2.7          | 150        | AB         | -         | 32.95             |
| <b>SAV6</b>   | <b>154-162</b> | <b>152-164</b> | <b>28</b>    | <b>200</b> | <b>C</b>   | <b>H2</b> | <b>Call</b>       |
| <b>SC1038</b> | <b>154-162</b> | <b>152-164</b> | <b>28</b>    | <b>200</b> | <b>C</b>   | <b>H2</b> | <b>49.95</b>      |
| SAV7          | 144-148        | 143-149        | 28           | 200        | C          | H2        | 39.95             |
| SAV12         | 144-148        | 130-160        | 5            | 150        | AB         | -         | 19.95             |
| SAV13         | 144-148        | -              | 5            | -          | -          | -         | 24.95             |
| SAV13VH       | 160-174        | -              | 5            | -          | -          | -         | 24.95             |
| SAV15         | 220-225        | -              | 30           | 200        | C          | H2        | 49.95             |
| SAV16H        | 150-160        | -              | 5            | 150        | C          | AB        | 29.95             |
| SAV16L        | 135-150        | -              | 5            | 150        | C          | AB        | 29.95             |
| <b>SAV17</b>  | <b>144-148</b> | <b>144-148</b> | <b>50</b>    | <b>400</b> | <b>C</b>   | <b>H2</b> | <b>Use SC1091</b> |
| <b>SC1091</b> | <b>144-148</b> | <b>144-148</b> | <b>50</b>    | <b>400</b> | <b>C</b>   | <b>H2</b> | <b>79.95</b>      |
| SAV21H        | 150-175        | -              | 32           | 200        | C          | H2        | 69.85             |
| SAV21L        | -              | -              | 32           | 200        | C          | H2        | 69.85             |
| SAV22A        | 144-148        | 130-160        | 7            | 15         | C          | 5-31A     | 34.95             |
| SAV24         | 144-148        | 140-174        | 50           | 400        | C          | H2        | Call              |
| SAV28         | 144-148        | -              | 7            | 20         | AB         | 5-23E     | 29.95             |
| SAV30H        | 144-174        | -              | 7            | 20         | AB         | 5-23E     | 29.95             |
| UUE0080       | see M67759     | -              | -            | -          | -          | -         | 39.00             |

## Philips VHF-UHF Power Modules

| Part Number | DC Volts | Freq Range | Max BW     | P out Min. W | P in mW          | Bias Class | Case     | Net     |
|-------------|----------|------------|------------|--------------|------------------|------------|----------|---------|
| BGD802      | 24       | 40-860     | -          | -            | -                | A          | SOT115J2 | \$45.00 |
| BGY32       | 12.5     | 68-88      | -          | 18 W         | 100              | C          | SOT-132B | Call    |
| BGY45B      | -        | 148-174    | 140-175    | 28 W         | 150              | C          | -        | Call    |
| BGY57       | 24       | 40-450     | 60 Ch CATV | Gp=22dB      | -                | A          | 714-04   | 29.95   |
| BGY82       | 24       | 40-450     | 60 Ch CATV | -            | Same as MHW5142A | -          | -        | 45.00   |
| BGY114E     | -        | 890-950    | -          | 6 W          | 3AW              | C          | SOT-278A | 45.00   |
| BGD116D     | -        | -          | -          | -            | -                | -          | -        | 39.95   |
| BGD116E     | -        | -          | -          | -            | -                | -          | -        | 39.95   |
| BGY581      | 24       | 40-550     | 77 Ch CATV | -            | -                | A          | -        | 49.00   |
| BGY582      | 24       | 40-550     | 77 Ch CATV | -            | -                | A          | -        | 49.00   |
| BGY585A     | 24       | 40-550     | 77 Ch CATV | -            | -                | A          | SOT115J  | 49.00   |
| 500495      | -        | -          | -          | -            | -                | -          | -        | 45.00   |
| 500496      | -        | -          | -          | -            | -                | -          | -        | 45.00   |
| 543258      | -        | -          | -          | -            | -                | -          | -        | 45.00   |

## Power Modules for ICOM Amateur & 2-Way

**NOW IN STOCK!**



**TOSHIBA**

### New ICOM SC-Series Modules

| Part # | Price   | Part # | Price   |
|--------|---------|--------|---------|
| SC1013 | \$59.95 | SC1038 | \$49.95 |
| SC1040 | \$94.95 | SC1046 | \$32.95 |
| SC1056 | \$79.95 | SC1091 | \$79.95 |
| SC1223 | \$59.95 | SC1318 | \$89.95 |

We can supply equivalent "SC" part numbers. Please contact our Customer Service Department by phone, fax, or e-mail for assistance.

| ICOM Part # | Equivalent Part # | ICOM Part # | Equivalent Part # | ICOM Part # | Equivalent Part # |
|-------------|-------------------|-------------|-------------------|-------------|-------------------|
| SC1005      | M57715            | SC1044      | SAV6              | SC1111      | M67703M           |
| SC1010      | M57710A           | SC1046**    | M57732            | SC1113      | M67727            |
| SC1011      | SAV7              | SC1054      | M57788M           | SC1114      | M67728            |
| SC1013**    | M57727*           | SC1056**    | M57729H           | SC1121      | M57797H           |
| SC1016      | M57716            | SC1062      | M57721L           | SC1124      | M57737R           |
| SC1018      | M57714            | SC1066      | M67711            | SC1125      | M57726R           |
| SC1019      | SAV7              | SC1068      | M67712            | SC1131      | M67741L           |
| SC1020      | M57727            | SC1069      | M57735            | SC1142      | M67748L           |
| SC1022      | SAV17             | SC1077      | M67732            | SC1143      | M67749M           |
| SC1024      | M57745            | SC1080      | M57732L           | SC1146      | *                 |
| SC1025      | M57796MA          | SC1081      | M57721M           | SC1193      | *                 |
| SC1026      | M57797MA          | SC1083      | M57787            | SC1197      | *                 |
| SC1027      | *                 | SC1088      | M67702            | SC1223**    | M67755H           |
| SC1028      | SAV15             | SC1090      | SAU16L            | SC1274      | M57786M           |
| SC1029      | SAV16H            | SC1091**    | SAV17             | SC1284      | M67799M           |
| SC1030      | M57797H           | SC1096      | M57796MA          | SC1307      | SAV6              |
| SC1038**    | SAV6              | SC1097      | M57797MA          | SC1318**    | M57788MR          |
| SC1040**    | M57762            | SC1106      | M57796H           | -           | -                 |
| SC1043      | M67715            | SC1107      | M67713            | -           | -                 |

\* Call for technical information. \*\*Now in stock. Mfg. Toshiba