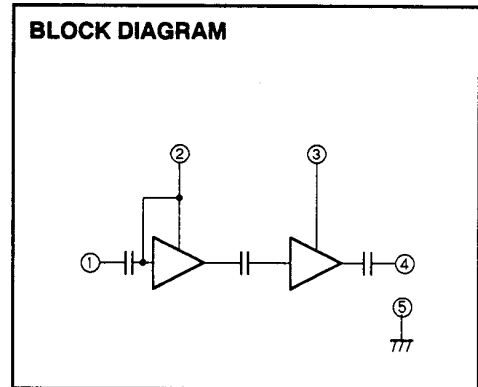
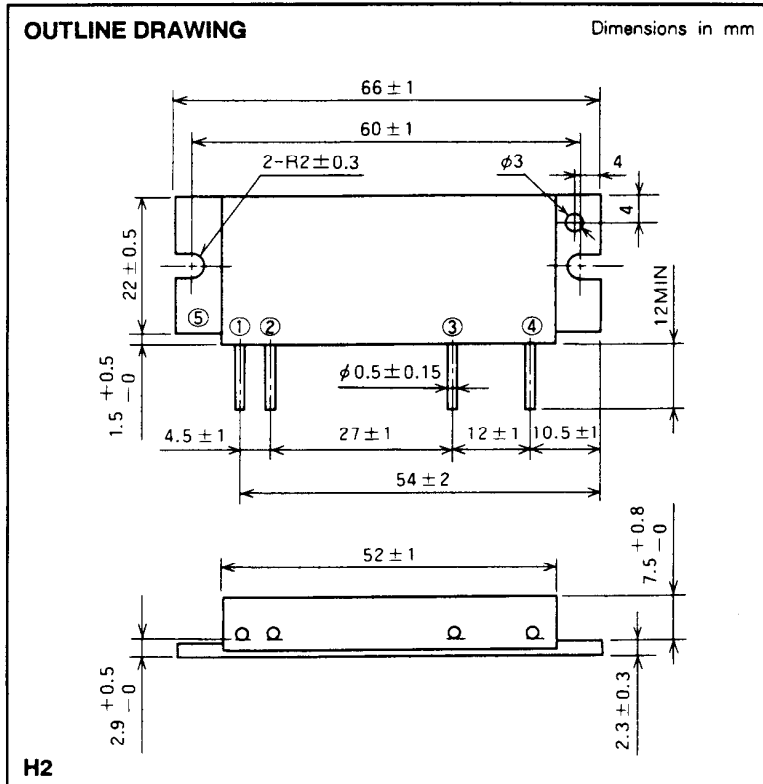


M67742

68-88MHz, 12.5V, 30W, FM MOBILE RADIO



- PIN :
- ① Pin : RF INPUT
 - ② Vcc1 : 1st. DC SUPPLY
 - ③ Vcc2 : 2nd. DC SUPPLY
 - ④ Po : RF OUTPUT
 - ⑤ GND : FIN

ABSOLUTE MAXIMUM RATINGS (T_c = 25 °C unless otherwise noted)

Symbol	Parameter	Conditions	Ratings	Unit
V _{cc}	Supply voltage		17	V
I _{cc}	Total current		10	A
P _{in(max)}	Input power	Z _G = Z _L = 50 Ω, V _{cc1} ≤ 12.5V	0.8	W
P _{o(max)}	Output power	Z _G = Z _L = 50 Ω	40	W
T _{c(OP)}	Operation case temperature		- 30 to 110	°C
T _{stg}	Storage temperature		- 40 to 110	°C

Note. Above parameters are guaranteed independently.

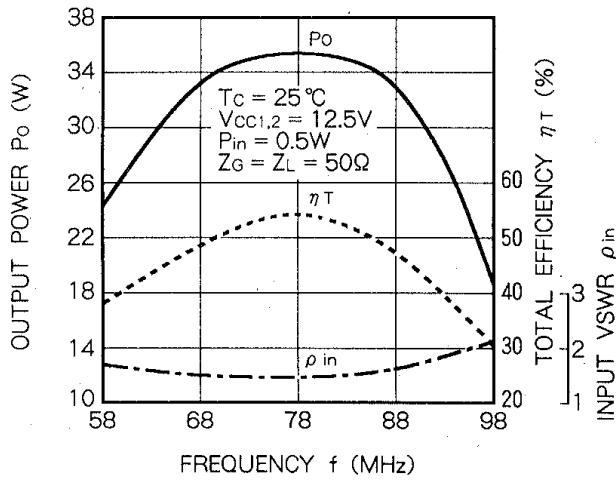
ELECTRICAL CHARACTERISTICS (T_c = 25 °C unless otherwise noted)

Symbol	Parameter	Test conditions	Limits		Unit
			Min	Max	
f	Frequency range	P _{in} = 0.5W V _{cc} = 12.5V Z _G = Z _L = 50 Ω	68	88	MHz
P _o	Output power		30		W
η _T	Total efficiency		40		%
2fo	2nd. harmonic			- 25	dBc
3fo	3rd. harmonic			- 30	dBc
ρ _{in}	Input VSWR			3.0	-
-	Load VSWR tolerance	V _{cc} = 15.2V, P _o = 30W (P _{in} : controlled) Load VSWR=20:1 (All phase), 2sec. Z _G = 50 Ω	No degradation or destroy		-

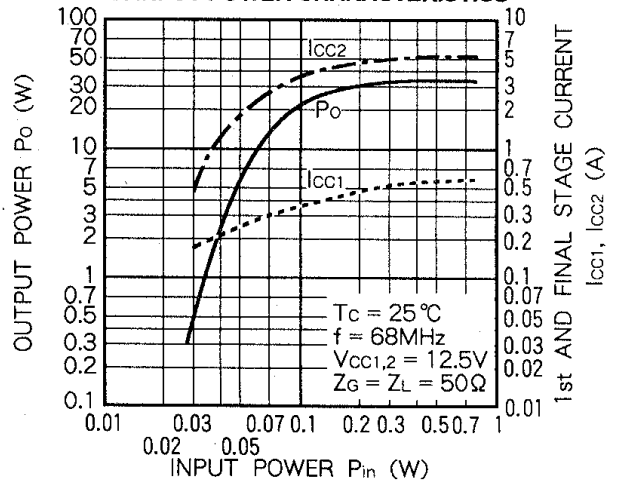
Note. Above parameters, ratings, limits and conditions are subject to change.

TYPICAL PERFORMANCE DATA

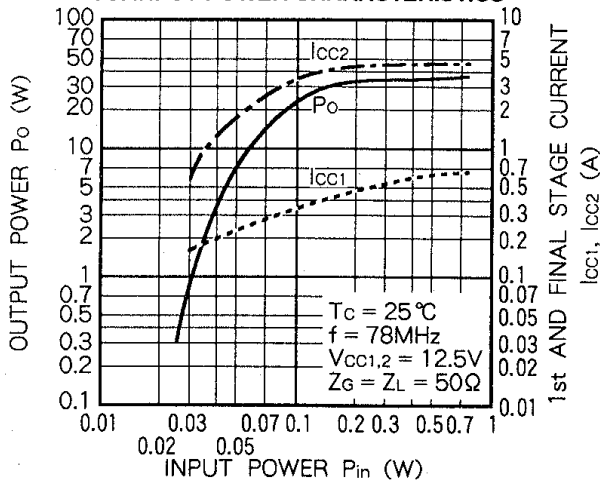
OUTPUT POWER, TOTAL EFFICIENCY, INPUT VSWR VS. FREQUENCY CHARACTERISTICS



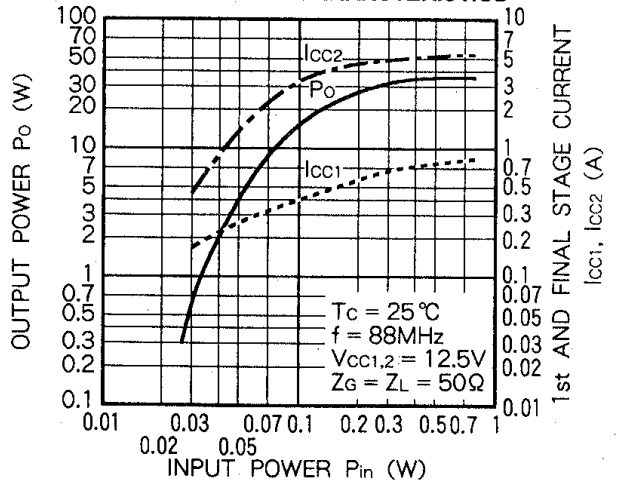
OUTPUT POWER, 1st. AND FINAL STAGE CURRENT VS. INPUT POWER CHARACTERISTICS



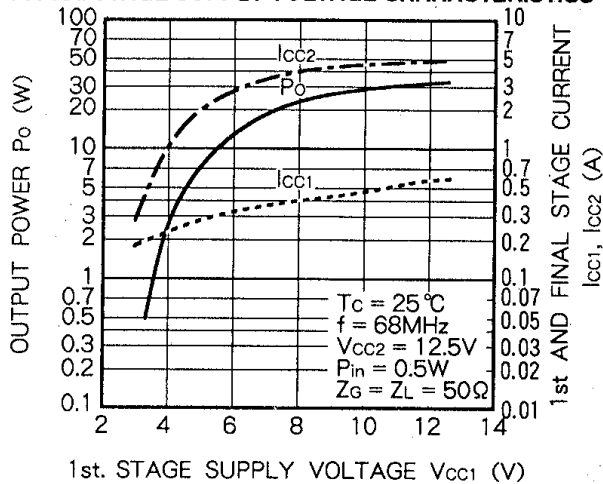
OUTPUT POWER, 1st. AND FINAL STAGE CURRENT VS. INPUT POWER CHARACTERISTICS



OUTPUT POWER, 1st. AND FINAL STAGE CURRENT VS. INPUT POWER CHARACTERISTICS



OUTPUT POWER, 1st. AND FINAL STAGE CURRENT VS. 1st. STAGE SUPPLY VOLTAGE CHARACTERISTICS



OUTPUT POWER, 1st. AND FINAL STAGE CURRENT VS. 1st. STAGE SUPPLY VOLTAGE CHARACTERISTICS

