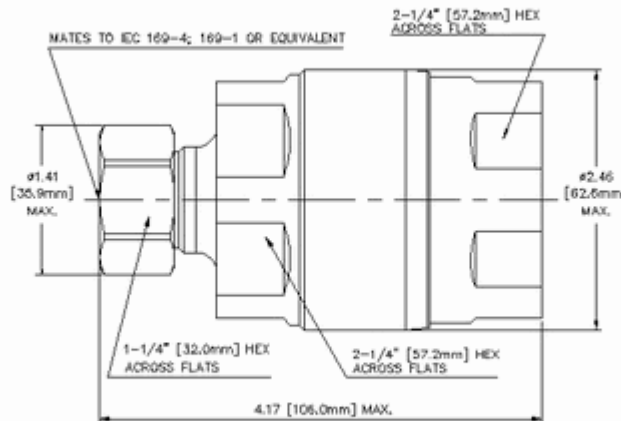


L7PDM-RPC

7-16 DIN Male OnePiece for 1-5/8" LDF7-50A HELIAX®



CHARACTERISTICS

Components

FRONT BODY	Material: Brass
	Exterior finish: Silver Plate
CENTER CONTACT	Material: Phosphor Bronze
	Exterior finish: Silver Plate
REAR BODY	Material: Brass
	Exterior finish: Trimetal Plate
BEARING SLEEVE	Material: Brass
	Exterior finish: Trimetal Plate
BALL BEARING	Material: Stainless Steel
INSULATOR	Material: Polymethylpentene
COUPLING NUT	Material: Brass
	Exterior finish: Trimetal Plate
SNAP RING	Material: Phosphor Bronze
O RING	Material: Silicone Rubber
O-RING	Material: Silicone Rubber
O-RING	Material: Silicone Rubber
O-RING	Material: Silicone Rubber
O-RING	Material: Silicone Rubber
PLUG	Material: Silicone Rubber
SAW GUIDE	Material: Nylon
FOAM SEPARATING TOOL	Material: Nylon

Electrical

Recommended maximum operating frequency, GHz	2.50	Cable Limited
--	------	---------------

Customer Support Center:

From North America: 1-800-255-1479
 International: +1-708-873-2307

This Specification Sheet is for reference only and is subject to change without notice.

Copyright © 2004 Andrew Corporation
 02 March 2004

L7PDM-RPC

7-16 DIN Male OnePiece for 1-5/8" LDF7-50A HELIAX®

Peak power, max, kW	40.00	Connector Limited
Average power, max, kW @ 900 MHz	3.00	Connector Limited
dc test maximum voltage	4,000.00	Connector Limited
RF operating voltage, max, VRMS	1,415.00	Connector Limited
RF high potential, max, VRMS	1,980.00	Connector Limited
3rd order IM, product typical @ 910 MHz, -dBm (Method)	-120.00	
Insulation resistance, min, Megaohms	5,000.00	Connector Limited
Connector impedance, ohms	50.00	
Cable impedance, ohms	50.00	
Insertion loss, max, dB	0.05 $\sqrt{\text{frequency(GHz)}}$	
Connector Return Loss, dB		
<u>Start</u> <u>Stop</u> <u>Return Loss</u>		
0.04 - 2.20 GHz	36.00	

Mechanical

Inner attachment method	Captivated
Outer attachment method	Ball Clamp
Connector weight, g	717.00
Pressurizable	No
Coupling nut retention force, N (lb)	1,000.85 (225.00)
Method	MIL-C-39012C-3.25, 4.6.22
Minimum coupling nut torque, N-m (lb-in)	24.86 (220.00)
Minimum connector retention tensile force, N (lb)	2,224.11 (500.00)
Minimum connector retention torque, N-m (lb-in)	13.56 (120.00)
Attachment durability, number of cycles	25
Interface durability, number of cycles	500

Environmental

Moisture resistance test	MIL-STD-202F, Method 106F
Mechanical shock test	MIL-STD-202F, Method 213B, Test Condition C
Corrosion test	MIL-STD-1344A, Method 1001.1, Test Cond. A
Thermal shock test	MIL-STD-202F, Method 107G, Test Cond. A-1, Low Temp-55°C
Vibration test	IEC 68, Part 2-6
Operating temperature range, °C	-55.00°C - 150.00°C
Storage temperature range, °C	-55.00°C - 85.00°C
Immersion test, unmated connectors	IEC 529:1989, IP68
Water jetting test, unmated connectors	IEC 529:1989, IP66

Customer Support Center:

From North America: 1-800-255-1479
 International: +1-708-873-2307

www.andrew.com

This Specification Sheet is for reference only and is subject to change without notice.
 Copyright © 2004 Andrew Corporation
 02 March 2004