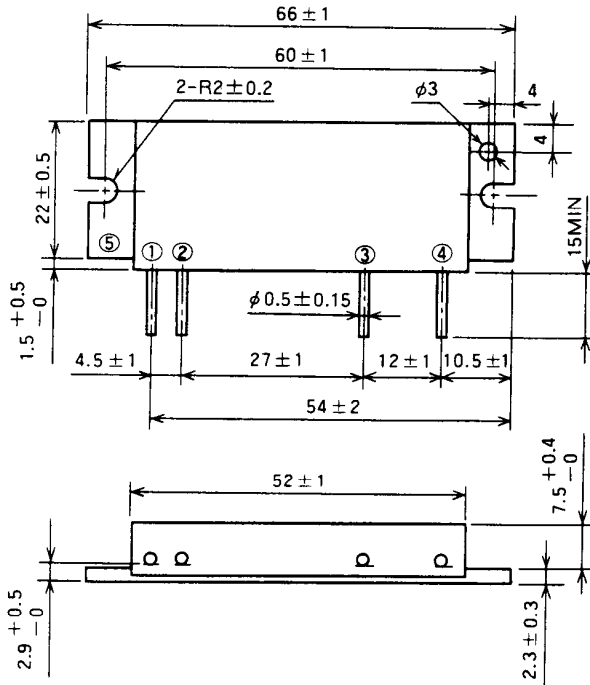


M67741H

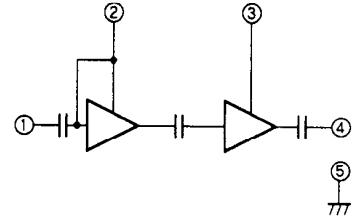
150-175MHz, 12.5V, 30W, FM MOBILE RADIO

OUTLINE DRAWING

Dimensions in mm



BLOCK DIAGRAM



PIN :

- ① Pin : RF INPUT
- ② VCC1 : 1st. DC SUPPLY
- ③ VCC2 : 2nd. DC SUPPLY
- ④ Po : RF OUTPUT
- ⑤ GND : FIN

ABSOLUTE MAXIMUM RATINGS (T_C = 25 °C unless otherwise noted)

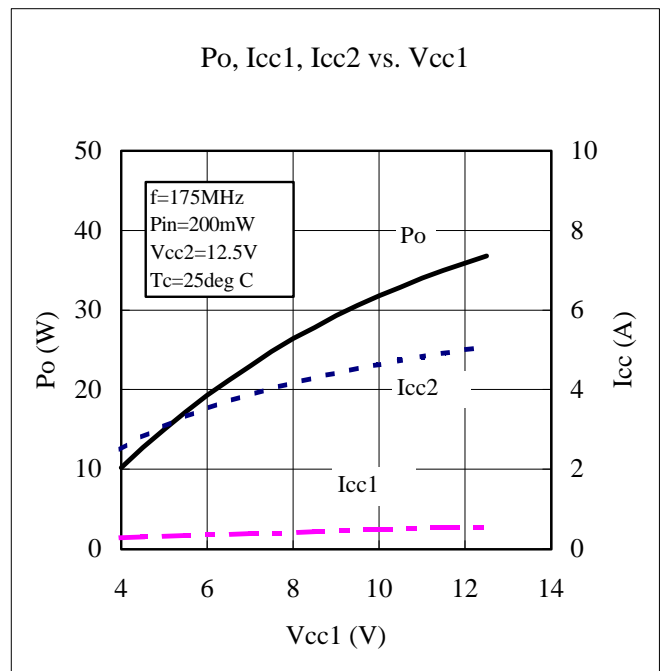
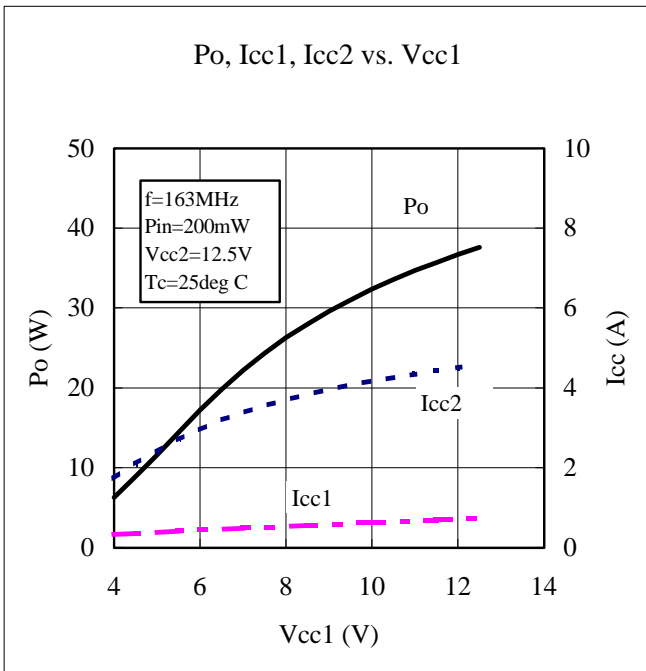
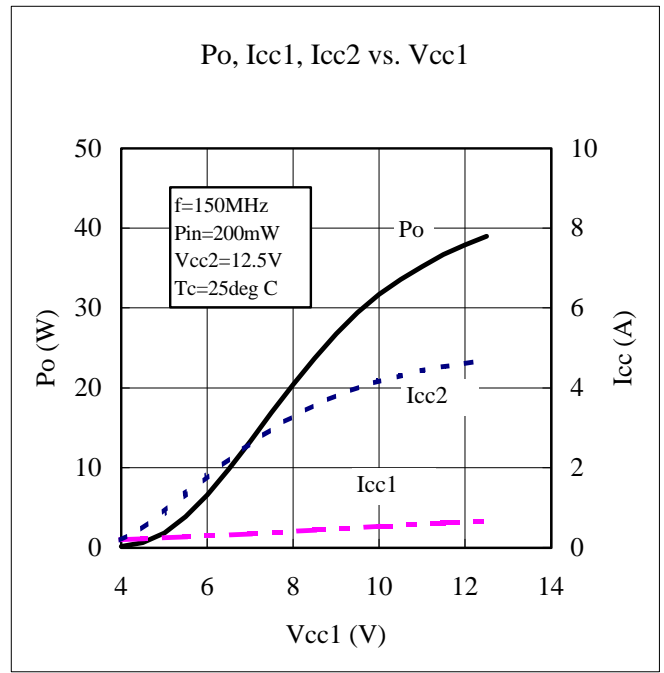
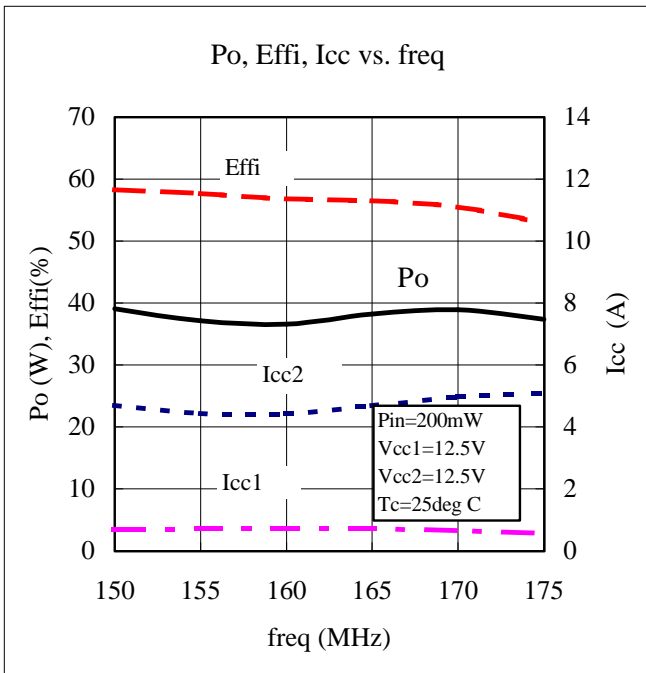
Symbol	Parameter	Conditions	Ratings	Unit
V _{CC}	Supply voltage		17	V
I _{CC}	Total current		7	A
P _{in(max)}	Input power	Z _G = Z _L = 50 Ω, V _{CC1} ≤ 12.5V	0.5	W
P _{o(max)}	Output power	Z _G = Z _L = 50 Ω	35	W
T _{C(OP)}	Operation case temperature		- 30 to 110	°C
T _{stg}	Storage temperature		- 40 to 110	°C

Note. Above parameters are guaranteed independently.

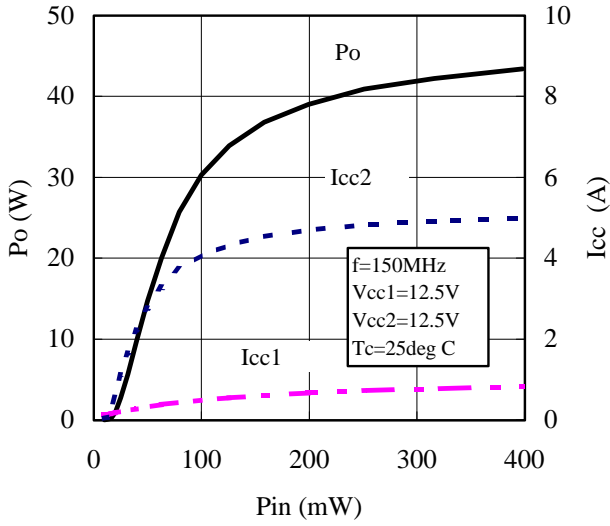
ELECTRICAL CHARACTERISTICS (T_C = 25 °C unless otherwise noted)

Symbol	Parameter	Test conditions	Limits		Unit
			Min	Max	
f	Frequency range	P _{in} = 0.2W V _{CC} = 12.5V Z _G = Z _L = 50 Ω	150	175	MHz
P _o	Output power		30		W
η _T	Total efficiency		40		%
2f _o	2nd. harmonic			- 25	dBc
3f _o	3rd. harmonic			- 30	dBc
ρ _{in}	Input VSWR			3.3	-
-	Load VSWR tolerance	V _{CC} = 15.2V P _o = 30W (P _{in} : controlled) Load VSWR ≥ 20:1 (All phase), 2sec. Z _G = 50 Ω	No degradation or destroy		-

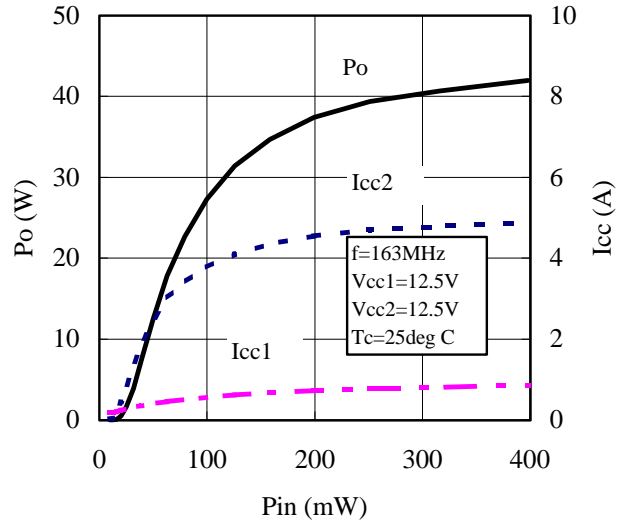
Note. Above parameters, ratings, limits and conditions are subject to change.



Po, Icc1, Icc2 vs. Pin



Po, Icc1, Icc2 vs. Pin



Po, Icc1, Icc2 vs. Pin

