

# TERMINATIONS

SMA, up to 18 GHz, 2 Watts

## SPECIFICATIONS:

Models: 3004M, 3004F, 3004MC, 3004FC

**RoHS**  
Compliant

### Electrical:

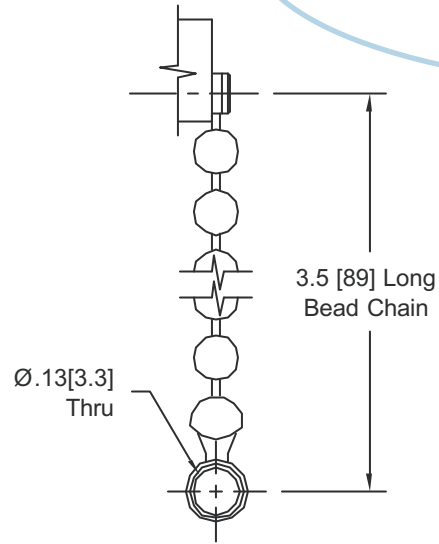
Frequency Range _____	DC - 18 GHz
Standard Freq. Values _____	6** & 18 GHz
VSWR	
DC - 4 GHz _____	1.15:1 Max.
4 - 8 GHz _____	1.20:1 Max.
8 - 12.4 GHz _____	1.25:1 Max.
12.4 - 18 GHz _____	1.30:1 Max.
Impedance _____	50 Ohms
Input Power _____	2 Watts Avg. @ +25°C
	<small>Derated Linearly to 1 Watt @ +125°C</small>
Peak Power _____	250 Watts Max.
	<small>(5uSec Pulse, .05% Duty Cycle)</small>
Temperature Coefficient _____	±250 ppm/°C
Operating Temp Range _____	-65°C to +125°C

### Mechanical:

SMA Connectors _____	Passivated Stainless Steel
<small>Mates with MILSTD-348</small>	
Conductors _____	Gold Plated Beryllium Copper
Bead Chain _____	Passivated Stainless Steel

\*\*For DC - 6 GHz Units add -067 to the Model Number

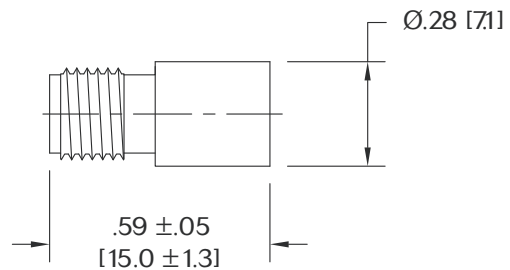
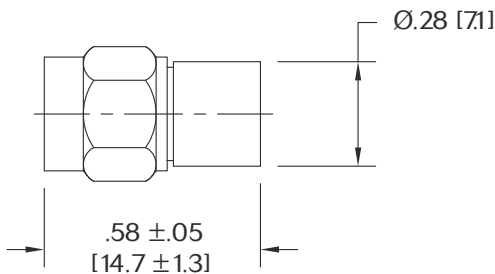
**AEROFLEX**  
A passion for performance.



CHAIN DETAIL

Model Number: **3004M**  
SMA Male Connector

Model Number: **3004F**  
SMA Female Connector



## HOW TO ORDER:

Model Number: **3004XY-XXX**

Connector Configuration

M = Male  
F = Female

Style

= No Chain  
C = Chain Included

Frequency Range

= DC - 18 GHz  
067 = DC - 6 GHz

## Ordering Examples:

Model Number: **3004MC**  
DC - 18 GHz; SMA Male; Chain Included

Model Number: **3004F-067**  
DC - 6 GHz; SMA Female; No Chain

Model Number: **3004M**  
DC - 18 GHz; SMA Male; No Chain

Note: Dimensions in Brackets are Expressed in Millimeters and are for Reference Only.  
Design specifications are subject to change without notice.  
Contact factory for technical specifications before purchasing or use.

3004: REV L

**AEROFLEX**  
INMET

Aeroflex / Inmet, Inc. 300 Dino Drive, Ann Arbor, MI 48103 • U.S.A.  
888-244-6638 or 734-426-5553 • FAX: 734-426-5557  
[www.aeroflex.com/inmet](http://www.aeroflex.com/inmet) • [inmet-sales@eroflex.com](mailto:inmet-sales@eroflex.com)