

GUARANTEED CAPACITANCE RANGE AND VOLTAGE

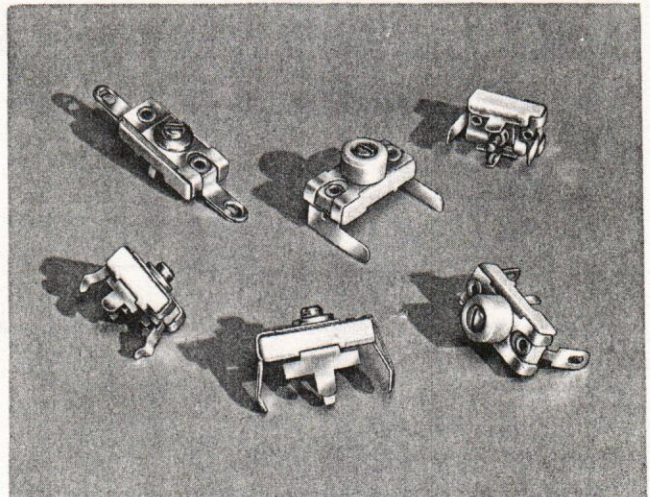
WORKING VOLTAGE	175VDC	250VDC
TEST VOLTAGE	350VDC	500VDC

TYPE 42

MINIMUM CAPACITANCE ¹ pF	MAXIMUM CAPACITANCE ² pF	CATALOG NUMBER ³
2.5	12	_4200/_
3.5	25	_4201/_
7	40	_4202/_
16	100	_4203/_
25	150	_4204/_
40	200	_4205/_
55	250	_4206/_
75	300	_4207/_
95	350	_4208/_
115	400	_4209/_
130	450	_4210/_
150	500	_4211/_
170	550	_4212/_
200	600	_4213/_
220	650	_4214/_
240	700	_4215/_

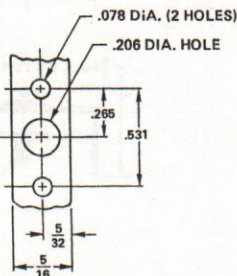
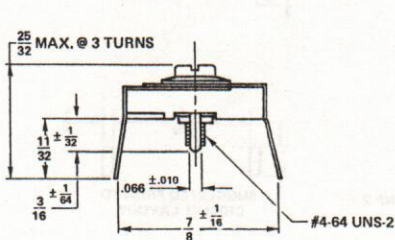
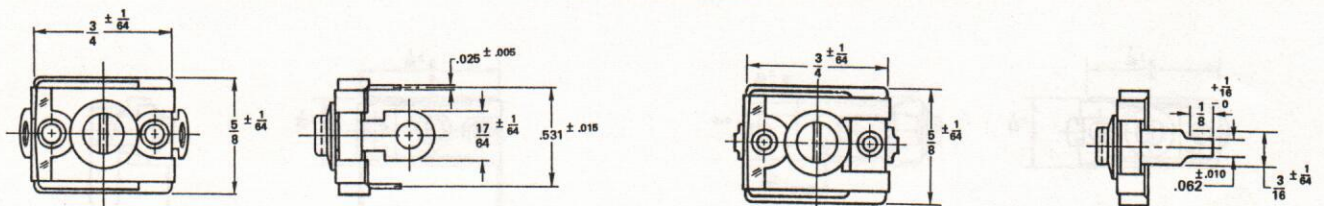
SPECIAL VARIATIONS

For Types 40, 42

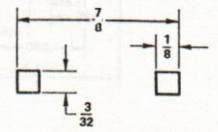
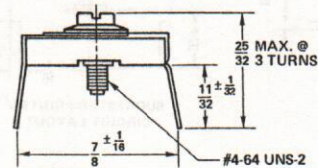


1. Minimum capacitance (equal to, or less than, the value indicated) shall occur when the adjusting screw is rotated 3 turns from tight position.
2. Maximum capacitance (equal to, or greater than, the value indicated) shall occur when the adjusting screw is at tight position with tight defined as 1 3/4 pound-inches.
3. See page 6 "Ordering Data" for complete description of F. W. catalog number.

TYPE 46



SUGGESTED HOLE LAYOUT
FOR MOUNTING BRACKET



SUGGESTED PRINTED
CIRCUIT LAYOUT

Style "A" – This capacitor style is supplied with a staple which is used for mounting the trimmer on a 5/16" width bracket. The capacitor terminals are provided with holes to accommodate point to point wiring.

Style "C" – This capacitor style is another variation for printed circuit application. This unit is not supplied with the raised staple but has .062" width notched terminals to raise the trimmer from the printed circuit board. These terminals can be supplied with a .093" width when specified.