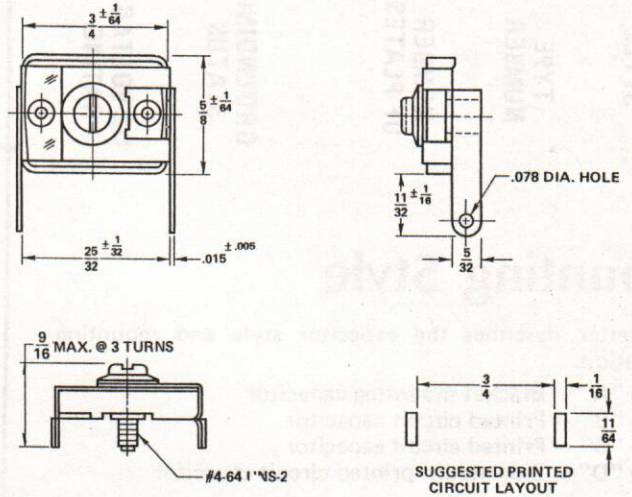
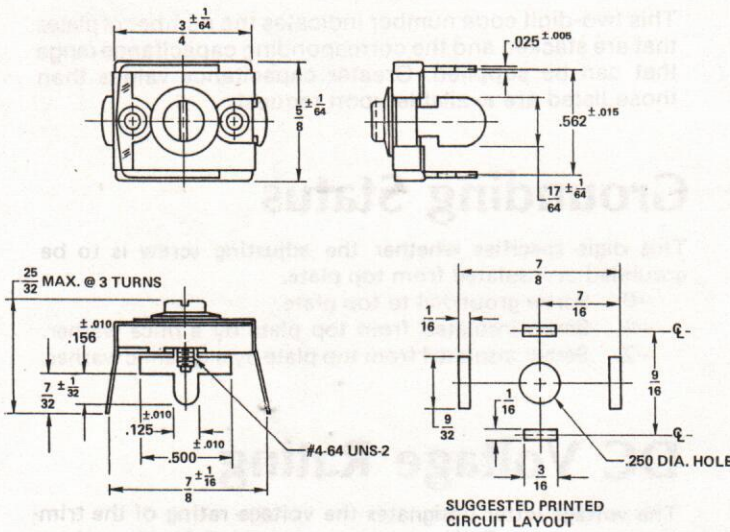


# TYPE 46 TRIMMERS (Continued)

**Style "B"** — This capacitor style is supplied with a raised staple and solid terminals for printed circuit application.

**Style "D"** — This capacitor is supplied with special terminals which allow the unit to be mounted on its side for horizontal adjustment.



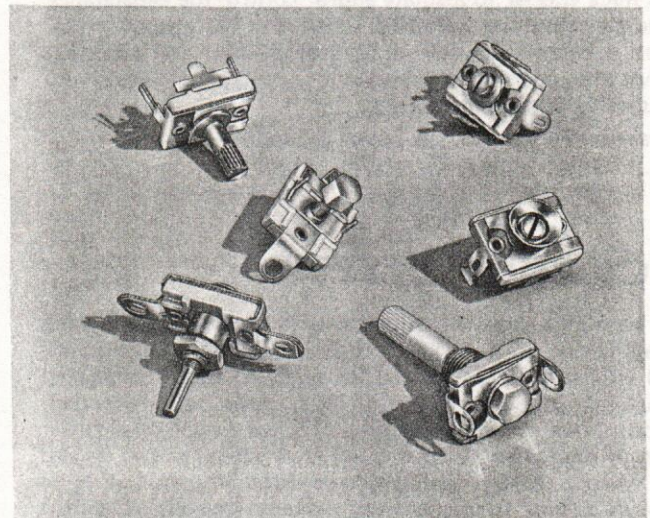
## GUARANTEED CAPACITANCE RANGE AND VOLTAGE

WORKING VOLTAGE	175VDC	250VDC
TEST VOLTAGE	350VDC	500VDC

## TYPE 46

MINIMUM CAPACITANCE <sup>1</sup> pF	MAXIMUM CAPACITANCE <sup>2</sup> pF	CATALOG NUMBER <sup>3</sup>
3	15	4600/---
5	30	4601/---
10	80	4602/---
20	180	4603/---
45	280	4604/---
75	380	4605/---
105	480	4606/---
140	580	4607/---
175	680	4608/---
215	790	4609/---
260	900	4610/---
300	1000	4611/---
330	1100	4612/---
360	1200	4613/---
380	1300	4614/---
420	1400	4615/---

## ASSEMBLY VARIATIONS



1. Minimum capacitance (equal to, or less than, the value indicated) shall occur when the adjusting screw is rotated 3 turns from tight position.
2. Maximum capacitance (equal to, or greater than, the value indicated) shall occur when the adjusting screw is at tight position with tight defined as 1 3/4 pound-inches.
3. See page 6 "Ordering Date" for complete description of F. W. catalog number.