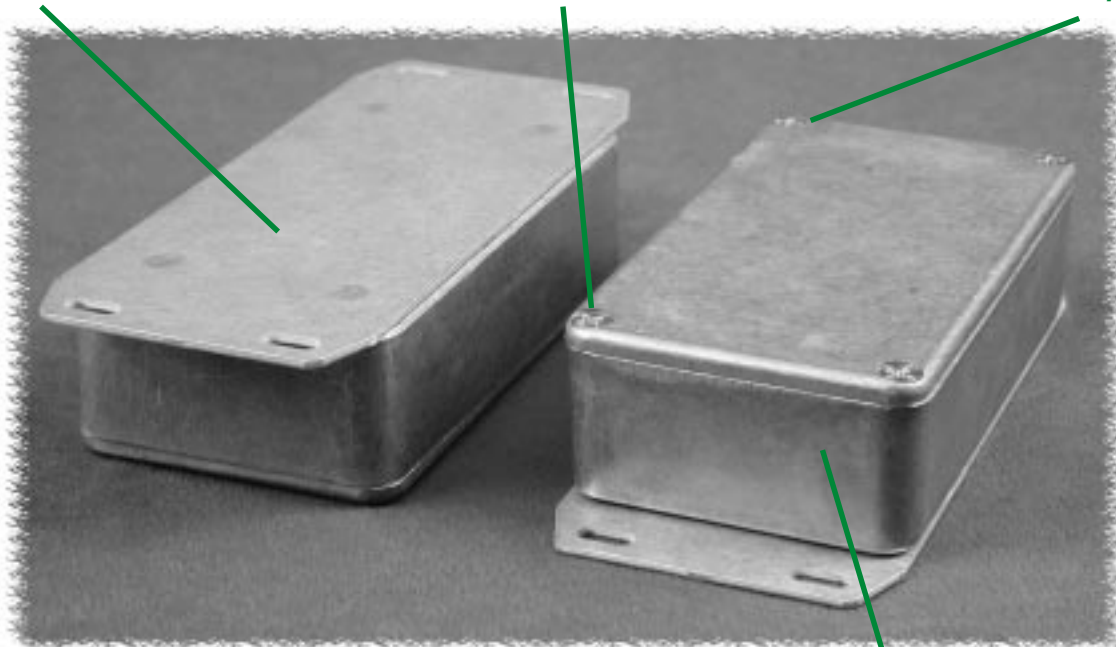


# Natural & Painted With Flange (1590 Series)

*Bottom flange is an aluminum plate, welded onto the base of the enclosure...*

*Lid screws are exposed for easy enclosure access...*

*Countersunk lid with machine screws into drilled and tapped holes...*

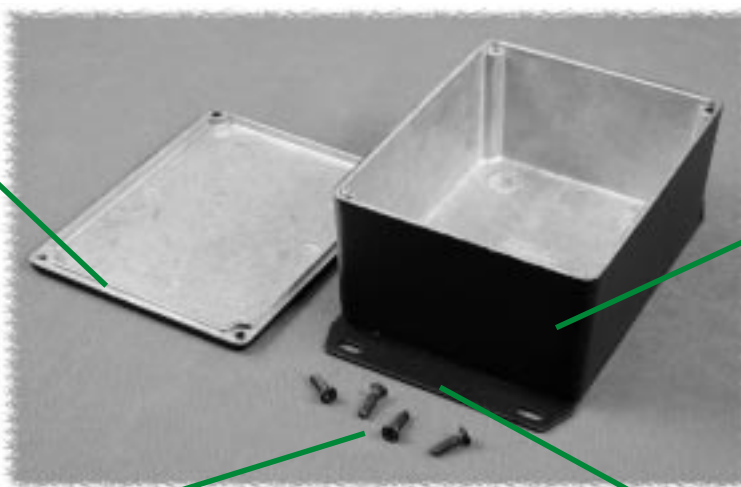


*Vibra finished for a smooth surface with no sharp edges...*

## OTHER KEY FEATURES

- Rugged, diecast aluminum alloy (tough yet easy to machine), electronic instrument enclosure.
- Lap joint construction provides protection against access of dust and splashing water. Also provides for improved EMI/RFI shielding.
- Painted version (shown below) is painted with tough polyester powder paint for a lasting finish, even after machining.
- Four (or 6 in 1590D, 1590DD & 1590E, 8 in 1590F) 6-32 x 1/2" machine screws secure lid - into tapped holes.
- Designed to meet IP54
- Replacement screws for natural finish series, nickel plated, 6-32 x 1/2" - **1590MS100** - Package of 100
- Replacement black chromate screws for black series, 6-32 x 1/2" - **1590MS50BK** - Package of 50

*Lap joint construction - lip masked to ensure good EMI/RFI connection to base...*

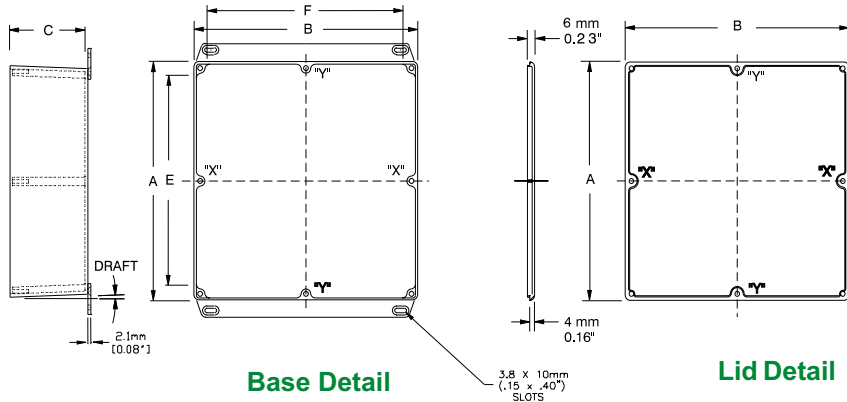


*Vibra finished for a smooth surface with no sharp edges, then painted with tough polyester powder paint...*

*Enclosure uses machine screws into drilled & tapped holes matched to enclosure color...*

*Bottom flange is an aluminum plate, welded onto the base of the enclosure...*

# Natural & Painted With Flange (1590 Series)



Base Detail

Lid Detail

| Part Number |           | Units      | Dimensions    |               |              |               |               | Apx. Draft |
|-------------|-----------|------------|---------------|---------------|--------------|---------------|---------------|------------|
| Unpainted   | Black     |            | A             | B             | C (No Lid)   | E             | F             |            |
| 1590LLBF    | 1590LLFBK | inch<br>mm | 1.97<br>50    | 1.97<br>50    | 0.83<br>21   | 1.22<br>31    | 1.22<br>31    | 1°15'      |
| 1590LBF     | 1590LBFBK | inch<br>mm | 1.99<br>50.5  | 1.99<br>50.5  | 1.06<br>27   | 1.36<br>34.5  | 1.36<br>34.5  | 1°15'      |
| 1590HF      | 1590HFBK  | inch<br>mm | 2.07<br>52.5  | 1.50<br>38    | 1.06<br>27   | 1.41<br>35.9  | .86<br>21.8   | 1°15'      |
| 1590YF      | 1590YFBK  | inch<br>mm | 3.62<br>92    | 3.62<br>92    | 1.50<br>38   | 2.70<br>69    | 2.70<br>69    | 1°15'      |
| 1590AF      | 1590AFBK  | inch<br>mm | 3.64<br>92.5  | 1.52<br>38.5  | 1.06<br>27   | 3.01<br>76.5  | .89<br>22.5   | 1°15'      |
| 1590GF      | 1590GFBK  | inch<br>mm | 3.94<br>100   | 1.97<br>50    | 0.83<br>21   | 3.31<br>84    | 1.34<br>34    | 1°15'      |
| 1590SF      | 1590SFBK  | inch<br>mm | 4.35<br>110.5 | 3.21<br>81.5  | 1.57<br>40   | 3.72<br>94.5  | 2.58<br>65.5  | 1°15'      |
| 1590BF      | 1590BFBK  | inch<br>mm | 4.39<br>111.5 | 2.34<br>59.5  | 1.06<br>27   | 3.76<br>95.5  | 1.71<br>43.5  | 1°15'      |
| 1590BBF     | 1590BBFBK | inch<br>mm | 4.67<br>118.5 | 3.68<br>93.5  | 1.18<br>30   | 4.04<br>102.5 | 3.05<br>77.5  | 1°15'      |
| 1590UF      | 1590UFBK  | inch<br>mm | 4.70<br>119.5 | 4.70<br>119.5 | 2.17<br>55   | 4.07<br>103.5 | 4.07<br>103.5 | 1°15'      |
| 1590VF      | 1590VFBK  | inch<br>mm | 4.70<br>119.5 | 4.70<br>119.5 | 3.54<br>90   | 4.07<br>103.5 | 4.07<br>103.5 | 1°15'      |
| 1590CF      | 1590CFBK  | inch<br>mm | 4.72<br>120   | 3.70<br>94    | 2.07<br>52.5 | 4.09<br>104   | 3.07<br>78    | 2°         |
| 1590QF      | 1590QFBK  | inch<br>mm | 4.72<br>120   | 4.72<br>120   | 1.18<br>30   | 4.09<br>104   | 4.09<br>104   | 1°15'      |
| 1590TF      | 1590TFBK  | inch<br>mm | 4.74<br>120.5 | 3.13<br>79.5  | 2.17<br>55   | 4.11<br>104.5 | 2.50<br>63.5  | 1°15'      |
| 1590N1F     | 1590N1FBK | inch<br>mm | 4.77<br>121.1 | 2.60<br>66    | 1.39<br>35.3 | 4.09<br>103.8 | 1.92<br>48.7  | 1°15'      |
| 1590KKF     | 1590KKFBK | inch<br>mm | 4.92<br>125   | 4.92<br>125   | 2.10<br>53   | 4.13<br>105   | 4.13<br>105   | 1°15'      |
| 1590KF      | 1590KFBK  | inch<br>mm | 4.92<br>125   | 4.92<br>125   | 2.95<br>75   | 4.27<br>108.5 | 4.27<br>108.5 | 1°15'      |
| 1590JF      | 1590JFBK  | inch<br>mm | 5.71<br>145   | 3.74<br>95    | 1.77<br>45   | 5.06<br>128.5 | 3.09<br>78.5  | 2°         |
| 1590P1F     | 1590P1FBK | inch<br>mm | 6.01<br>153   | 3.24<br>82    | 1.81<br>46   | 5.38<br>137   | 2.48<br>63    | 2°         |
| 1590DDF     | 1590DDFBK | inch<br>mm | 7.38<br>187.5 | 4.70<br>119.5 | 1.30<br>33   | 6.77<br>172   | 4.07<br>103.5 | 1°15'      |
| 1590DF      | 1590DFBK  | inch<br>mm | 7.38<br>187.5 | 4.70<br>119.5 | 2.05<br>52   | 6.75<br>171.5 | 4.07<br>103.5 | 2°         |
| 1590EF      | 1590EFBK  | inch<br>mm | 7.38<br>187.5 | 4.70<br>119.5 | 3.07<br>78   | 6.75<br>171.5 | 4.07<br>103.5 | 2°         |
| 1590FF      | 1590FFBK  | inch<br>mm | 7.38<br>187.5 | 7.38<br>187.5 | 2.48<br>63   | 6.75<br>171.5 | 6.75<br>171.5 | 2°         |
| 1590R1F     | 1590R1FBK | inch<br>mm | 7.55<br>192   | 4.38<br>111   | 2.24<br>57   | 6.92<br>176   | 3.76<br>95.4  | 2°         |

**Notes:** Assembled height = dimension "C" + .16" (4.0 mm). Wall & lid thickness is roughly .08" (2 mm) and varies with draft due to part being cast. Posts "X" exist on parts 1590D, 1590DD & 1590E. Posts "X" & "Y" exist on part 1590F. For detailed drawings, CAD files or color photos visit our website at: [www.hammondmgf.com](http://www.hammondmgf.com)

Diecast



**CANADA**  
Guelph, Ontario (519) 822-2960  
St. Laurent, Quebec (514) 343-9010  
**USA**  
Cheektowaga, NY (716) 651-0086

[www.hammondmgf.com](http://www.hammondmgf.com)

**EUROPE**  
Basingstoke, UK +44 1256 812812

**AUSTRALASIA**  
Queenstown, SA, Australia +61 8 8240 2244