



CONTENTS

- Diodes, Rectifiers, Zeners20
- Feedback Modification Kit20
- 866A Solid State Replacement20
- H.V. Bridge Rectifiers21
- H.V. Open Stack Rectifiers21
- Epoxy Encapsulated H.V. Rectifiers .22
- H.V. Rectifier Blocks22

Diodes, Rectifiers & Zeners

Part #	Net	Part #	Net	Part #	Net	Part #	Net	Part #	Net
Special Diodes									
1N21C	\$10.95	RLS135 PIN	3.50	1N3209	15A, 100V Call CATHODE TO CASE	1N5234B	6.2v .50	1N3005B	100v 6.95
1N21WE	15.00	SV0310	.	1N3209R	15A, 100V Call ANODE TO CASE	1N5239B	9.1v .70	1N3008B	120v 6.95
1N23B	13.00	XB15A204	1.55	1N3293R	35.00	1N5240B	10v .70	1N3015A	200v 6.95
1N23G	15.00	XB15A308	1.55	1N3491	3.85	1N5245B	15v .50	1N3996A	5.1v 6.95
1N3595	Schottky 1.25	XB15A402	2.25	1N3600	200mA, 50V .	1N5246B	16v .70	1N3999A	6.8v 6.95
1N5711	Schottky 1.75	XB15A407	2.95	1N3666	.90	1N5248B	18v .60	50 W	
1N5817M	Schottky 1.95	MV1Y	sub 1N4148	1N4001/2/3	.20	1N5257B	3.3V .70	NTE5276AK	38.8V .
1N5819	Schottky 1.25	MV209	2.25	1N4004/5/6	.30	1 W			
1N6263	Schottky 1.25	MV1404	6.95	1N4007	.40	1N3826A	5.1v \$.90	50 W T0-3 Case	
1S2076A	1.45	MV2109	2.45	1N4009	.40	1N4729A	3.9v .90	1N2805A	7.5v \$10.95
1SS53	1.55	MV2301	2.45	1N4148	.20	1N4730	3.9v .90	1N2806B	8.2v 10.95
1SS85	2.95	Varistors		1N4454	.25	1N4733A	5.1v .70	1N2808A	10v 10.95
1SS103	.95	NVS-03 HR2510/2600	3.95	1N4997	4.35	1N4734A	5.6v .70	1N2810B	12v 10.95
1SS108	2.93	HSS-101	2.75	1N5391 HCD 1.5A 50v	.40	1N4735	6.2v .70	1N2832B	56v 10.95
1SS133	.75	SV-03YS	3.00	1N5395 HCD 1.5A 400v	.50	1N4736A	6.8v .70	1N2837B	91v 10.95
1SS154	1.95	Fast Recovery		1N5401 3A 100v	.25	1N4738A	8.2 .70	1N4559B	4.7v 15.95
1SS177	.70	1.5A/1500V		1N5402 3A 200v	.25	1N4740	10v .70	50 W Stud Case	
1SS184	1.25	GP20M-008		1N5403 3A 400v	.30	1N4741A ¹	11v Call	1N3305B	6.8v 10.95
1SS187	.90	\$ 1.25		1N5404 3A 400v	.30	1N4742A	12v .70	1N3306B	7.5v 10.95
1SS190	.85	60A Peak/1 Cycle, 1.5ns		1N5406 3A 600v	.30	1N4744	15v .70	1N3307B	8.2v 10.95
1SS193	.85	recovery time, MFG: Gen Instr.		1N5407 3A 800v	.30	1N4746A	18v .70	1N3308B	9.1v 10.95
1SS226	.95	1A/1600V		1N5408 3A 1Kv	.35	1N4747A	20v .70	1N3309B	10v 10.95
1SS301	.95	GP10Y		1N5623	1A, 1000V .	1N4751A	30v .70	1N3311B	12v 10.95
1SS1587	.75	(1-4) 1.35		3N246	2A 50v 1.20	BX285C30	30v .40	1N3314B	15v 10.95
1SMB5934BT3	24V, 3W	(5-9) 1.20		3N257	2A 600v 1.35	1N4755	43v .70	1N3315B	16v 10.95
	SURFACE MOUNT	(10-24) 1.00		6A2	.70	1N4756A	45v .90	1N3340B	100v 10.95
1SV228	.65	(25-99) .80		6A05 6A 50v	.60	3 W			
BA182	2.19	30A Peak/1 Cycle, 150ns		P600K 6A 800v	.80	1N4934	100v \$.70	5 W	
MBD101	Schottky .	recovery time, LEAD FREE,		P600M 6A 1KV	1.00	1N5333B 3.3v \$1.45			
MBR380	Schottky 1.90	MFG: Vishay		W06M 1.5A 600v	1.00	1N5338B 5.1v 1.45			
MBR390	Schottky 1.90	Diode-Rectifier		MR750	7A, 50V .	1N5349B 12v 1.45			
HER10	.70	1N34A .45		MR751 7A 100v	1.00	1N5350B 13v 1.45			
HP5082-2800	Schottky 2.65	1N38/B .60		MR822	2.10	1N5353B 16v 1.45			
HP5082-2835	Schottky 2.25	1N60 1.00		MR1-1400R	1A .	1N5355B 18v 1.45			
MA27B	1.15	1N60A .		MR1125	5.90	1N5357B 20v 1.45			
MA27W	1.70	1N87 1.00		MR2000SR	2.10	1N5361 27v 1.45			
MA27T (SEE GALXMA27T)	1.70	1N100 1.50		RGP10J	1.25	1N5362B 28v 1.45			
MD001H PIN	.	1N198 .70		Zener Diodes					
MD004H PIN	.	1N270 1.25		250MW					
MI301 PIN (MITSUBISHI)	3.00	1N281 1.00		1N706A 5.6v \$.35					
MI402 PIN see XB15A402	3.75	1N541 3.35		400 MW					
MI407 PIN	3.75	1N765 .40		1N751A 5.1v \$.40					
MPN3404 PIN	.95	1N914 .29		1N752A 5.6v .40					
MR3222/1N3491R	.	1N914B .35		1N753A 6.2v .40					
UM9415 PIN	9.75	1N916 .70		1N756A 8.2v .40					
UM9401 PIN	5.95	1N1118 .		1N961B 10v .40					
RD20EB2	.	1N1183 30A 6.50		500MW					
		1N1184A 30A 6.90		1N5221 2.4v \$.70					
		1N1206A 12A, 600V .		1N5226B 3.6v .40					
		1N1596R 6.90		1N5227 3.6v .40					
		1N2611 .50		1N5230 4.7v .70					
		1N2637 HV 50.00		1N5236B 7.5v .70					



available if required.
Sold separately, ask when ordering.
 For the most current product & pricing information, please visit
www.rfparts.com

¹ LIMITED QUANTITY

Diodes, Rectifiers & Zeners, 866A SSR

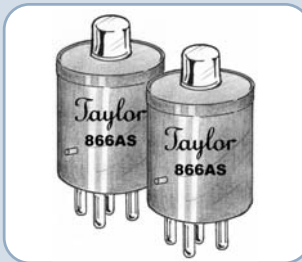
Common PIN Diode Specifications are listed on page 211

TAYLOR 866A Solid State Replacement

100% replacement for the mercury vapor 866A.

- High Efficiency
- Reduced Heat
- Long Life

Part #: 866AS-1
 Price: \$24.95 ea.



FEEDBACK MOD KIT

Feedback Modification Kit for Solid State amps

Add negative feedback to transmitters and amplifiers that was omitted by factory. Pride, Palomar, Atlas, Heathkit, etc. Instructions included.

Part #: NFB2 2 transistor amp \$3.00 ea.
 Part #: NFB4 4 transistor amp 6.00 ea.

Bridge Rectifiers

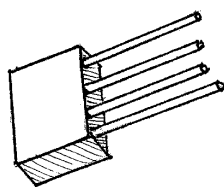


FIG. A

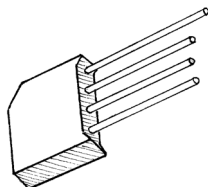


FIG. B

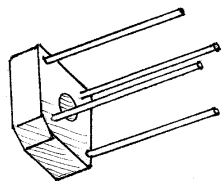


FIG. C

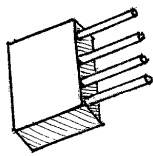


FIG. D

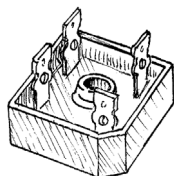


FIG. E



FIG. F
1.115" X 1.115"



FIG. G
1.26" X 1.26"

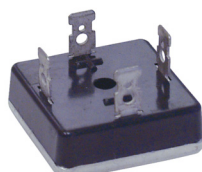


FIG. H



FIG. I

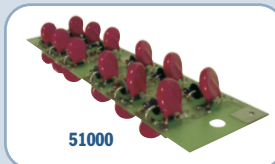


FIG. J

Part #	Fig.	Description	Price	Part #	Fig.	Description	Price
3N246	B	2A, 50V	1.20	KBPC35-08	F	35A, 800V	2.70
3N257	B	2A, 600V	1.35	MDA110A/ECG170	B	1A, 1KV	2.70
DD25-F160	J	25A, 1600V 1/2 Bridge/Voltage Doubler	8.95	MDA210/3N259	D	2A, 1KV	2.75
EFF15C	I	100/130A 240VAC	47.70	MDA942A1	D	1.5A, 50V	2.25
KBF	B	2A, 400V	1.35	MDA942A-3	D	1.5A, 200V	3.75
KBPC10-06DW	C	10A, 600V	2.50	MDA3500	H	35A, 50V	3.95
KBPC25-02	F	25A, 200V	2.50	PB66-B	C	6A, 600V	1.95
KBPC35-01	F	35A, 100V	2.65	R5202L	B	2A, 100V	.65
KBPC35-02	F	35A, 200V	2.65	RS407	B	4A, 800V	2.00
KBPC35-04	F	35A, 400V	2.70	KBPC5010 (KEST)	G	50A, 1000V	3.45
				KBPC5010 (SSI)	F	50A, 1000V	3.45

Open Stack High Voltage Rectifiers

For Technical Support, please contact our Technical Dept. at 760-744-0700 extension 314



51000

Part Number 51000

Convection Cooled, Open Construction High Voltage Rectifier. Individual board used in the 51050. It may be used in two's for lower power transmitters. Use as 24 KV PIV single string or as a doubler where 12 KV PIV per section is suitable. Conservatively rated at 5.5 Amperes. Direct replacement for CCA transmitters.

Part Number 55014

Convection Cooled, Open Construction High Voltage Rectifier. One of various configurations available. Used in many of the leading FM broadcast transmitters sold today. Conservatively rated at 5.5 Amperes, 40 KV (20 KV per section) PIV rating makes for a very high reliability component. Each rectifier element in the stack is bridged with a Heavy Duty MOV for the maximum in transient voltage protection. Requires minimum 100 CFM air flow. 100% interchangeable with rectifiers CK299, CKE047 and Part # 353-6596-030 in Continental's 5 KW through 30 KW transmitters (3 units required for the 3-phase full wave bridge).



55014

Our New Part #	Our Old Part #	Maximum PIV	Rated Current	Surge Current	Size Inches	Style
51000	51048	24 KV #	5.5 A	400 A	9.1 x 1.9 x 1.5	Board only, Single String
51014	51050	24 KV #	5.5 A	400 A	9 x 9 x 2.5	1 Ph FW Bridge
55014	55050 ¹	20 KV #	5.5 A	400 A	10.8 x 3.8 x 3.8	Doubler

Call for pricing.

With MOV transient protection. ¹ Continental Electronics equivalent.

High Voltage Doorbell Rectifiers

Standard Recovery, Stackable



S6HVM5

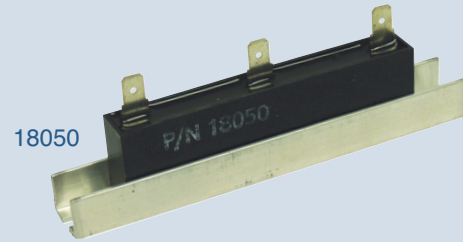
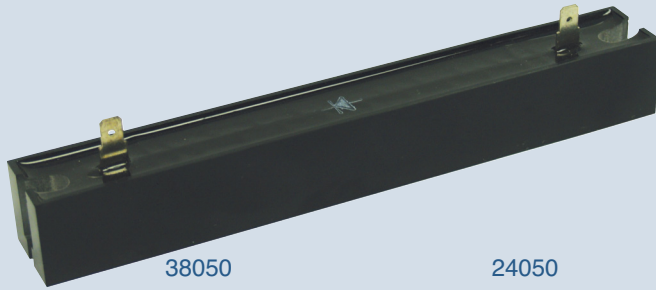


UDB5

Part Number	Maximum PIV	Rated Current	Surge Current	Size Dia. x W (in.)	Mfg.	Price Each
UDB5	5KV	2A	100A	1.9 x 0.79	National	\$35.00
UDE5	5KV	4.5A	200A	1.9 x 0.79	Unitrode	45.00
S6HVM5	5KV	2.4V	100A	1.9 x 0.82	Semtech	30.00

Limited Quantities Available

Epoxy Encapsulated High Voltage Rectifiers



Part Number 38050

Encapsulated High Voltage Single String Rectifier with heavy duty components designed for the most demanding of services. This assembly uses 6 Ampere rated diodes. Each diode is bridged with a resistor to divide transients equally across each component. Conservatively rated at 3 Amperes and 20,000 Volts PIV. Each end is slotted for #6 screw mounting.

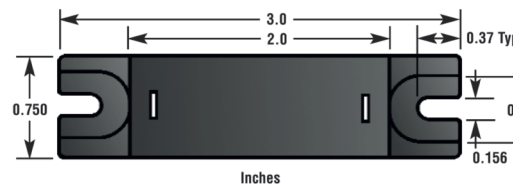
Part Number 18050

Encapsulated High Voltage Rectifier in a voltage doubler configuration. Uses 2.5 Ampere diodes encapsulated in thermally efficient epoxy which is then cemented into an aluminum channel for mounting. Rated 10,000 Volts PIV per section, or 20,000 Volts PIV for the whole assembly. This unit is rated 0.8 Ampere average. A slot is punched in each end of the channel for a #6 mounting screw.

Part #	PIV	Maximum Current	Surge Current	Size Inches	Style	Net Price
38050	20 KV	3.0 A	400 A	7.5 x 1 x 1	Single	125.00
18050	26 KV	0.8 A	60 A	4.8 x 0.63 x 1.5	Double	95.00
24050	3 KV	1.2 A	60 A	6 x 0.75 x 0.75	Double	95.00
MRD10000	26 KV	0.8 A	60 A	4.8 x 0.63 x 1.5	Double	95.00

High Voltage Rectifier Blocks

HC, 3HC High Voltage Rectifier Blocks



Part Number	Repetitive Peak Reverse Voltage V_{RRM} Per Leg V(Volts)	Avg. Forward Current Max $I_{FAVM@55^{\circ}C}$ A(Amps)	Max Forward Voltage Drop $V_F@5F$ Per Leg V(Volts)	Max Surge Current $I_{FSM}(8.3ms)$ A(Amps)	Price Each
HC5	5000	1.0	4.5	50	\$ 49.95
HC10	10000	1.0	9.0	50	54.95
3HC5	5000	2.5	4.8	150	64.95
3HC10	10000	2.0	9.0	150	69.95
3HC15	15000	1.5	13.2	150	79.95
HVP-16	16000	0.75	11.2	50	49.95
3HG20CT	20000	2.25	18	150	89.95