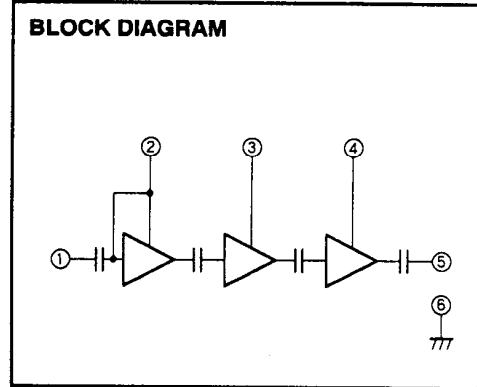
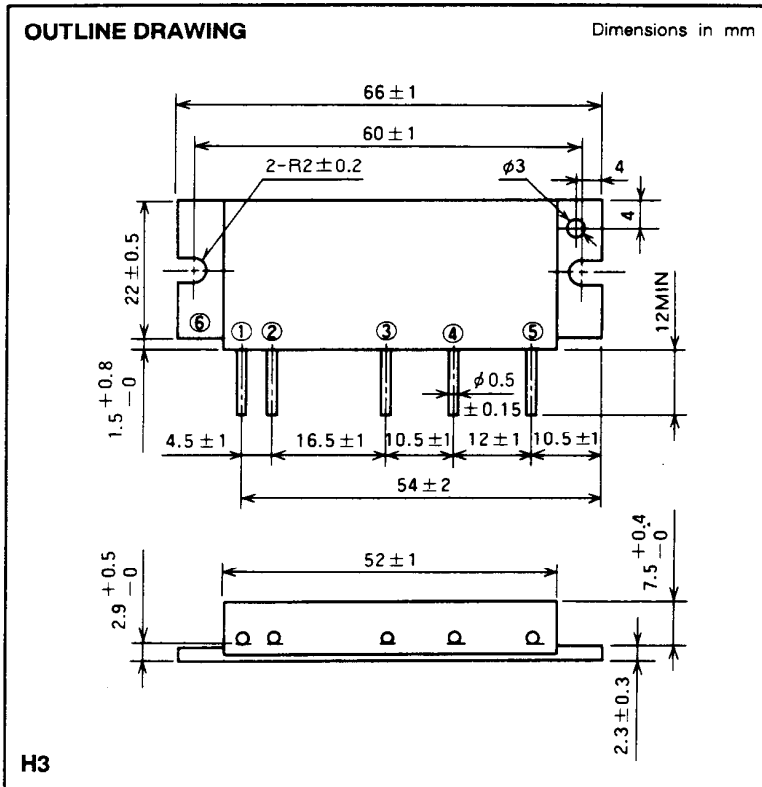


# M57704EL

335-360MHz, 12.5V, 13W, FM MOBILE RADIO



- PIN :
- ① Pin : RF INPUT
  - ② Vcc1 : 1st. DC SUPPLY
  - ③ Vcc2 : 2nd. DC SUPPLY
  - ④ Vcc3 : 3rd. DC SUPPLY
  - ⑤ Po : RF OUTPUT
  - ⑥ GND : FIN

**ABSOLUTE MAXIMUM RATINGS** (T<sub>c</sub> = 25 °C unless otherwise noted)

Symbol	Parameter	Conditions	Ratings	Unit
V <sub>cc</sub>	Supply voltage		17	V
I <sub>cc</sub>	Total current		5	A
P <sub>in(max)</sub>	Input power	Z <sub>G</sub> = Z <sub>L</sub> = 50 Ω	0.4	W
P <sub>O(max)</sub>	Output power	Z <sub>G</sub> = Z <sub>L</sub> = 50 Ω	20	W
T <sub>c(OP)</sub>	Operation case temperature		- 30 to 110	°C
T <sub>stg</sub>	Storage temperature		- 40 to 110	°C

Note. Above parameters are guaranteed independently.

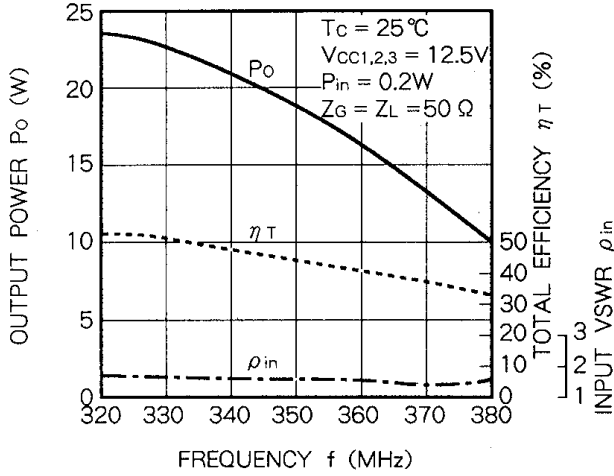
**ELECTRICAL CHARACTERISTICS** (T<sub>c</sub> = 25 °C unless otherwise noted)

Symbol	Parameter	Test conditions	Limits		Unit
			Min	Max	
f	Frequency range		335	360	MHz
P <sub>o</sub>	Output power	P <sub>in</sub> = 0.2W	13		W
η <sub>T</sub>	Total efficiency	V <sub>cc</sub> = 12.5V	35		%
2f <sub>o</sub>	2nd. harmonic	Z <sub>G</sub> = Z <sub>L</sub> = 50 Ω		- 30	dBc
ρ <sub>in</sub>	Input VSWR			2.8	-
-	Load VSWR tolerance	V <sub>cc</sub> = 15.2V, P <sub>o</sub> = 14W (P <sub>in</sub> : controlled) Load VSWR=20:1 (All phase), 2sec. Z <sub>G</sub> = 50 Ω	No degradation or destroy		-

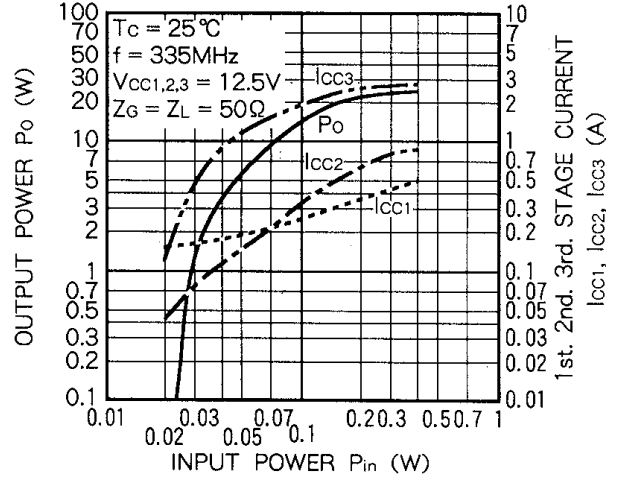
Note. Above parameters, ratings, limits and conditions are subject to change.

TYPICAL PERFORMANCE DATA

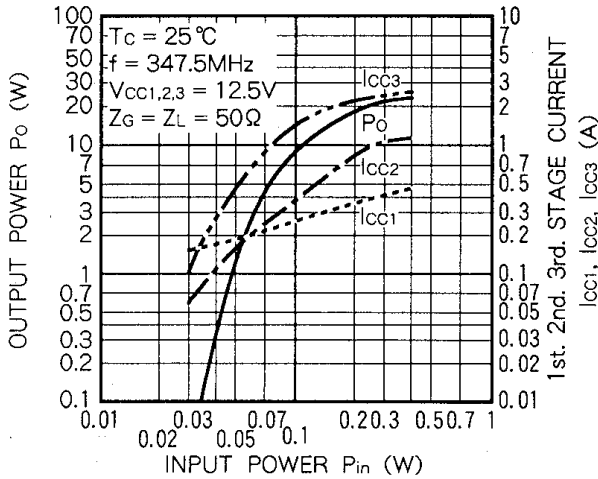
OUTPUT POWER, TOTAL EFFICIENCY, INPUT VSWR VS. FREQUENCY CHARACTERISTICS



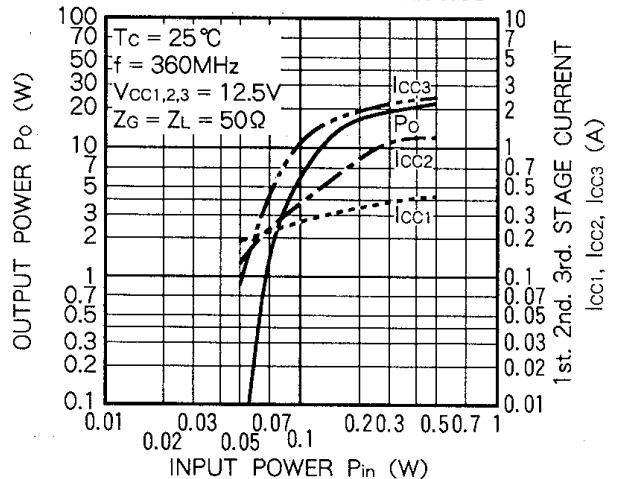
OUTPUT POWER, 1st. 2nd. 3rd. STAGE CURRENT VS. INPUT POWER CHARACTERISTICS



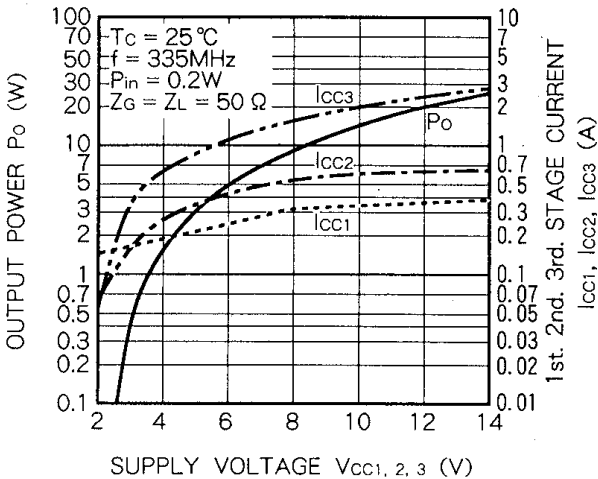
OUTPUT POWER, 1st. 2nd. 3rd. STAGE CURRENT VS. INPUT POWER CHARACTERISTICS



OUTPUT POWER, 1st. 2nd. 3rd. STAGE CURRENT VS. INPUT POWER CHARACTERISTICS



OUTPUT POWER, 1st. 2nd. 3rd. STAGE CURRENT VS. SUPPLY VOLTAGE CHARACTERISTICS



OUTPUT POWER, 1st. 2nd. 3rd. STAGE CURRENT VS. SUPPLY VOLTAGE CHARACTERISTICS

